

Cotterman®

Complete Guide to **ALL** **Cotterman®** Products



- Rolling Metal Ladders
- Workmaster™ Super Duty Ladders
- StockNStore™
- Work Platforms
- Office Ladders
- Step Stands and Stools
- Crossover Bridges
- Specialty Products
- Self-Closing Safety Gates
- Aluminum Railings
- Fixed Ladders
- Track Ladders
- Custom Solutions

R2C™

READY TO CLIMB

zero assembly time.

we assemble ladders. **you** shouldn't have to.

Cotterman®

www.cotterman.com • info@cotterman.com

4 MANUFACTURING FACILITIES

Michigan | Georgia | Texas | California

130 Seltzer Rd. • Croswell, MI 48422
1-800-552-3337 or 810-679-4400 Fax: 810-679-4510

© 2024 Material Control, Inc.

Workmaster
WMX05R37A9P3





Cotterman® Headquarters
Crosswell, MI

Cotterman **DELIVERS**™

OUR HISTORY

Cotterman® was established in 1925 as I.D. Cotterman Company, headquartered in Chicago, Illinois. The core product was rolling wood track ladders. In the mid 1940's, I.D. Cotterman introduced the rolling steel warehouse ladder, a form of rolling staircase designed to access nearly anything out of reach in industrial or commercial environments. Gradually rolling ladders became the core product line, and Cotterman® became the brand the industry associated with quality rolling ladders.

The company grew tremendously, exceeding the expectations and capabilities of the founding family. The Cotterman family sold I.D. Cotterman Company® in 1979 to Material Control, Inc., a manufacturer of heavy-duty electronic control equipment for the mining and bulk material handling industry. It was moved to Crosswell, Michigan where Material Control's manufacturing facilities are located.

Cotterman Company's strategy took an innovative change under the new management, headed by President Clint Stimpson. Getting closer to the customer, we theorized, would reduce costs in freight and lower the probability of freight damage. A formal plan was put into place and in 1988 a manufacturing plant was opened in Bakersfield, California. The new location produced enormous growth and in 1989 a plant was added in Atlanta, Georgia. In 2003, another manufacturing facility was added in Arlington, Texas. Through multiple manufacturing locations, Cotterman® is capable of delivering ladders at a lower cost to our customers while continuing to set the industry standard for quality and service.

Under the leadership of new President, Nick Valore, quality construction, innovative product development and fast, efficient shipping continue to keep Cotterman® in position as leader in sales to the industrial, commercial, national store, and MRO markets. These practices continue to solidify our brand identification as the largest and best manufacturer of rolling metal ladders, fixed ladders and other safety equipment.

RETURN POLICY

1. A return authorization must be requested within 30 days after original ship date. A Cotterman® return authorization number must appear on the return shipment.
2. Returns can be authorized only for common models that can be quickly resold. A minimum 20% restocking charge (from net price) will be charged for handling, inspection and repainting. Custom designs cannot be returned. With sizing errors, replacement ladders or platforms must be reordered at the same time.
3. Return freight must be prepaid.
4. All returns must be returned to point of origin and are subject to inspection. Additional charges may apply for replacement parts and repairs.

NOTE: This return policy is intended to accommodate common ordering errors. i.e., sizing or duplications, and does not apply to warranty or workmanship claims or factory errors.

WARRANTY

All Cotterman® products are guaranteed against defects in workmanship and materials for a period of one (1) year after shipment. At our discretion, Cotterman Company will repair or replace the product in question at no charge — subject to inspection. Freight damage, misapplication and misuse of the product are not covered by this warranty.

TABLE OF CONTENTS

Product Selection Guide	4-5
Rolling Metal Ladders	6-20
Series 1000	8
Series 1500	10
Series 1200 & 1700	11
Series 2600	12
Trailer Access Platform	13
Series "A"	14
Aluminum Wheelbarrow Ladder	16
TiltNRoll®	18
Straddle Base TiltNRoll®	20
Series 6500	20
Workmaster™ Super Duty Ladders	21-24
Steel Workmaster™	22
Aluminum Workmaster™	24
StockNStore® Folding Ladders	25-28
Steel StockNStore®	26
Aluminum StockNStore®	28
Work Platforms	29-34
Work Platforms	30
Dual Access Work Platforms	32
Adjustable Height Work Platforms	34
Office Ladders	35-37
Step Stands & Stools	38-39
Crossover Bridges	41-44
Standard Crossover Bridges	42
Space Saver Crossover Bridges	44
Specialty Products	45-49
Series 4000	45
Series 5000	45
Series 3000	46
Series PC	47
Fold-Up Step	47
Dock Ladders	48
Storage Tank Ladders	48
Workmaster™ Overhead work Platform	49
Stockmaster™ Overhead work Platform	49
Self-Closing Safety Gates	50-51
Aluminum Railings	52-53
Fixed Ladders	54-57
Track Ladders	58-59

PRODUCT SELECTION GUIDE

The task of choosing the correct ladder or Cotterman® product for your needs can be a daunting one. So please use this book to guide you through the selection process. If you already know what you're looking for, that's great! If not, please allow us to help you find it!

Simply select a product category, and we'll help you with the process of selecting the ladder that best suits your needs. If you have any questions concerning any of our products, please feel free to contact our Customer Service department.



CROSSOVER BRIDGES

pg. 41

Crossover bridges provide safe walkways over a variety of obstacles such as conveyors, machines, and pipes. Legs mount to the floor and load capacity is 500 lbs. Available in standard or space saver models.



SPECIALTY PRODUCTS

pg. 45

We also offer a wide variety of "specialty products" for users who have a need for something more specific and tailored to their use. Whether you need built-in shelving or a cantilever, we have you covered.



rolling metal ladders

pg. 6

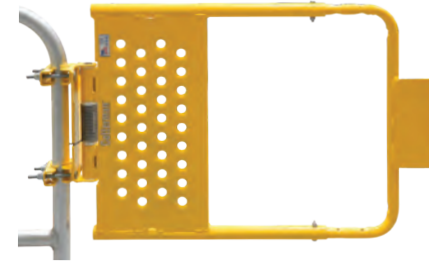
The industry standard rolling warehouse ladder. With many options, such as tread, climb angle, SafeLock, and multi-directional wheels, Cotterman® Rolling Metal Ladders are sure to elevate your productivity.



Workmaster™

pg. 21

The Workmaster Super-Duty Rolling Metal Ladder stands alone. It's heavy duty construction gives it a 1,000 lb. load capacity, and makes it more damage resistant than almost any other ladder.



SELF-CLOSING SAFETY GATES

pg. 50

Cotterman® adjustable self closing safety gates assist your facility in meeting OSHA and ANSI requirements for guarding ladderway openings.



ALUMINUM RAILINGS

pg. 52

Cotterman® Railings provide a sure & strong barrier. Lightweight aluminum construction is weather resistant and makes installation quick and easy.



STOCK 'N STORE™

pg. 25

The Stock 'N Store® folding rolling ladder is a perfect solution for small retail stores and tight work spaces. The ladder is lightweight, folds quickly, and stores easily. One of the most versatile rolling ladders available today.



WORK STANDS / PLATFORMS

pg. 29

The Series WP has a work area with a larger platform to provide room for tools and/or an additional person. The Cotterman® SafeLock option is available, in case frequent movement is anticipated.



FIXED LADDERS

pg. 54

Often referred to as "wall-mounted, roof access or hatch ladders". Cotterman® Fixed Ladders are available with or without cages and handrails, and are available in Steel, Aluminum and Stainless Steel.



TRACK LADDERS

pg. 60

Quick access. Easy to use. Easy to store. An exclusive design permits storage of the ladder in a tight vertical position against shelves when not in use and allows easy passage of persons or equipment in the aisle.



OFFICE LADDERS

pg. 35

Combining the high quality construction of our industrial ladders with an attractive design and finish that suits the office, or any environment. Three handrail configurations are available. Available in 12 colors.



STEP STANDS and STOOLS

pg. 38

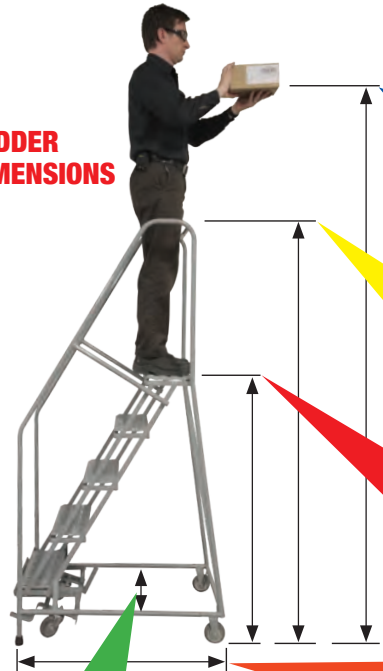
Heavy duty construction allows for a 500 lb. load capacity. Superior engineering allows for a very stable and easy to move step stand that is great for almost any work environment where a quick step up is needed.

rolling metal ladders™

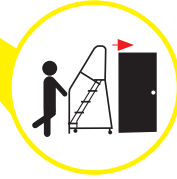
FIRST THING'S FIRST

First, we need to determine what size ladder you need. One of the most common mistakes made in ordering many ladders is getting them too large for the available workspace. Here are some things to consider before ordering your new ladder:

1 LADDER DIMENSIONS



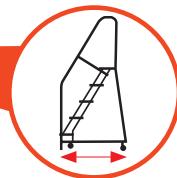
Working height is the approximate height that you would like to be able to comfortably reach. It is usually calculated at 5.5' above the ladder's platform height.



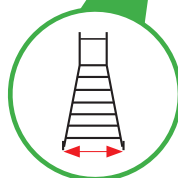
Overall height is VERY important. You want to be sure that your ladder will not be too tall to fit into your workspace. This includes being able to fit through any doors that you may need to move it through, or under any ceilings or fixtures that you may have.



Top Step height is the measurement of the top step from the ground. It's important that this measurement is not too far above or below your desired working height.



Base length is the measurement of how long the base of the ladder runs. This is dependent upon the height of the ladder. The taller the ladder, the longer the base. Also lower climb angles increase base length.



Base width is also very important because as ladders get taller, the base width increases. It is important to be sure that the ladder will not be too wide for your workspace. We offer different tread widths to accommodate most work areas.

2 TREAD WIDTH

Cotterman® offers various tread widths to accommodate almost any situation. So, it is up to you, the user, to determine how and where the ladder will be most commonly used. Our treads vary in widths from 16" to 30" to allow for space, storage and usage constraints or requirements.



16" TREAD WIDTH

The 16" tread is ideal for users who require a more narrow ladder due to space restrictions, such as a narrow aisle or cramped areas.



24" TREAD WIDTH

The 24" tread is our "standard" width. It is the most commonly used size and offers versatility in most workspaces.



30" TREAD WIDTH

The 30" tread is great for users who will be using the ladder in larger areas. It is also ideal for those who may be carrying larger items up and down the ladder frequently.

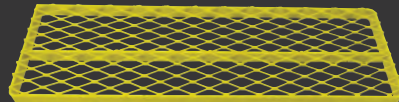
TREAD TYPES

Cotterman® offers a variety of tread types to suit your needs. So, no matter what environment your ladder will be in, we have a tread that will offer the optimal grip.



Perforated (A6)

Perforated holes provide excellent slip resistance.



Expanded Metal (A1)

Open step design prevents debris buildup.



Vinyl (A2)

Solid metal step with nonslip ribbed vinyl tread. Ideal for use in office, retail or industrial environments.



Serrated (A3)

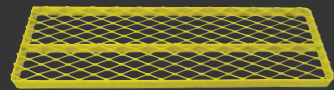
Open step Premium Serrated Tread. For rugged applications.



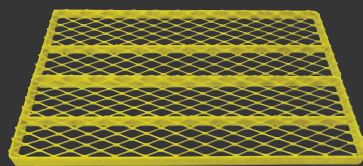
Extruded Aluminum (A4)

TOP STEP OPTIONS

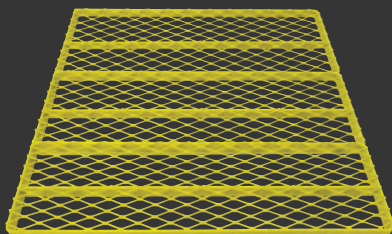
On most Cotterman® Rolling Metal Ladders, we offer Deep Top Step options. Depending on ladder series the standard top step is 10"-12" deep, but 20"-24" and 30" options are available for larger standing area. Series "A" top step is 14" deep top step only.



STANDARD
10" - 12"



DEEP
20" - 24"



EXTRA DEEP
30"

WHEELS & CASTERS

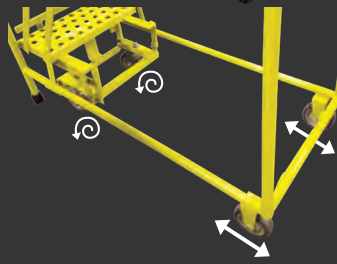
Our Rolling Metal ladder series comes equipped with one of five wheel and caster systems. So, your ladder will move smoothly and easily to the next job, every time.



Spring-Loaded Casters

Multi-Directional Mobility. Allows 360° mobility.

1-4 step ladders have spring-loaded casters that retract whenever weight is applied.



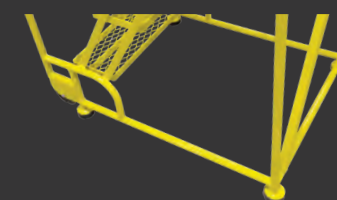
SafeLock™ with 4" wheels

Foot-activated locking mechanism with swivel casters and rigid rear wheels. Available on 4-step & above.



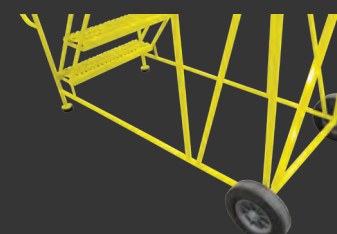
Dual End SafeLock™ with Multi-directional 4" wheels

Swivel casters on front and back. Allows 360° mobility. Available on 5-step & above.



TiltNRoll™

The TILT-N-ROLL® features a special balanced design that allows it to tilt easily to the rolling position when pulled toward the user. Available in 2-6 step models.



10" SOLID RUBBER WHEELS

10" rubber wheels for easy portability, even on rough surfaces.

CLIMBING ANGLE

Cotterman® offers 2 climbing angles in our Rolling Metal Ladders. 59° is standard and the 50° climbing angle makes carrying items up and down the ladder easier.



59° Climbing Angle

Standard on:
1000 series
450lb load rating
1500 series
450lb load rating



50° Climbing Angle

Standard on:
1200 series — 450lb load rating
1700 series — 450lb load rating
2600 series — 800lb load rating

The 50° climbing angle increases base length measurements.

3 LOAD RATING

Load rating is also very important. It is the measurement of the total weight that the ladder is built to support. This includes the user's weight combined with any objects or materials that they may be carrying up and down.

350-450 lbs.

One person, general use.

500 lbs.

One person, heavy-duty use.

800 lbs.

Heavy-duty ladders and two person work platforms.

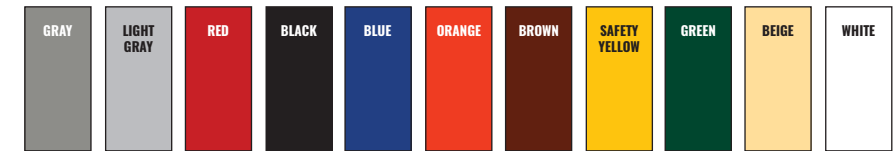
1,000 lbs.

One person, Super-duty ladders.



COLOR OPTIONS

Cotterman® offers a variety of powder-coated colors to suit your needs. Choose from any of the following 11 colors.



R2C
READY TO CLIMB

SHIPS FULLY SET-UP AND READY TO USE



KNOCKED-DOWN ASSEMBLY REQUIRED



- Arrives fully set-up and ready to use
- ZERO assembly time
- Available in 1-12 step models
- No difference in freight cost to Knocked-Down ladders

- Arrives Knocked-Down. Assembly required (30 minutes to 1 hour assembly time depending on size)
- Available in 3-19 steps, but no difference in freight cost from R2C
- Required for large ladders 13-step and above (and 12-step with 30" deep top step)

NOTE: Rolling ladders ship either set up or unassembled (knocked-down). When possible, most customers prefer set-up – there is zero assembly time and they are less likely to get damaged in transit, which can delay the ladder going into use. We take care to ensure, though, that every ladder arrives damage free and on time. Shipping with our preferred carrier from one of our four manufacturing locations provides the best assurance of the right ladder for your needs when you need it.



OUR MOST POPULAR SERIES!

R2C
READY TO CLIMB
zero assembly time.

SERIES 1000

Rolling Metal Ladders



1008R2632A1



1001N2626A1

1002N2626A1

1004N2626A3

1002R2626A6E20
(WITH 20" DEEP TOP STEP)

1004R1820A3

1005R2630A6
(WITH OPTIONAL D3 CHAIN)

1007R2630A1E20
(WITH 20" DEEP TOP STEP)

1011R2632A6

The industry **STANDARD!**

COTTERMAN® SERIES 1000 is our flagship product line. The value added features of this product make it our best seller. Ships set-up from one of our four locations, reducing freight costs and damage. Plus, when it arrives, it goes directly in to use.

- 450 lb. load rating.
- 59° climb angle.
- All tube members are 1" steel tube construction.
- Steps are 7" deep in your choice of tread.
- Top steps are 10", 20" or 30" deep.
- Spring-loaded 2" casters are used on 1 to 4 step ladders. The Cotterman® SafeLock is used on 5 step ladders and above.
- Gray powder coat is the standard finish.
- Series 1000 ladders meet applicable OSHA and ANSI standards.
- CAL-OSHA models also available.



1007R2630A6



SERIES 1000 Rolling Metal Ladders MODEL NUMBERS & MEASUREMENTS

LOAD RATING 450 LBS.

DESCRIPTION	TOP STEP HEIGHT	OVERALL HEIGHT	WORKING HEIGHT (approx.)	16" TREAD WIDTH			24" TREAD WIDTH			30" TREAD WIDTH (A6 not available)					
				MODEL NUMBER	BASE WIDTH	BASE LENGTH	WEIGHT LBS.	MODEL NUMBER	BASE WIDTH	BASE LENGTH	WEIGHT LBS.	MODEL NUMBER	BASE WIDTH	BASE LENGTH	WEIGHT LBS.
1 STEP NO HANDRAILS	12"	12"	78"	1001N1818	18"	16"	18	1001N2626	26"	16"	29	--	--	--	--
1 STEP WITH HANDRAILS	12"	16"	78"	1001G1818	18"	16"	19	1001G2626	26"	16"	26	--	--	--	--
2 STEP NO HANDRAILS	20"	20"	86"	1002N1818	18"	19"	25	1002N2626	26"	19"	29	--	--	--	--
2 STEP WITH HANDRAILS	20"	50"	86"	1002R1818	18"	19"	37	1002R2626	26"	19"	36	--	--	--	--
3 STEP NO HANDRAILS	30"	30"	96"	1003N1820	20"	26"	41	1003N2630	30"	26"	42	--	--	--	--
3 STEP WITH HANDRAILS	30"	60"	96"	1003R1820	20"	26"	43	1003R2630	30"	26"	50	--	--	--	--
4 STEP NO HANDRAILS	40"	40"	106"	1004N1820	20"	31"	45	1004N2630	30"	31"	53	1004N3232	32"	31"	66
4 STEP WITH HANDRAILS	40"	70"	106"	1004R1820	20"	31"	53	1004R2630	30"	31"	61	1004R3232	32"	31"	74
5 STEP WITH HANDRAILS	50"	80"	116"	1005R1820	20"	40"	81	1005R2630	30"	40"	97	1005R3232	32"	40"	113
6 STEP WITH HANDRAILS	60"	90"	126"	1006R1824	24"	46"	95	1006R2630	30"	46"	109	1006R3232	32"	46"	128
7 STEP WITH HANDRAILS	70"	100"	136"	1007R1824	24"	53"	105	1007R2630	30"	53"	121	1007R3232	32"	53"	143
8 STEP WITH HANDRAILS	80"	110"	146"	1008R1824	24"	61"	131	1008R2632	32"	61"	154	1008R3232	32"	61"	179
9 STEP WITH HANDRAILS	90"	120"	156"	1009R1824	24"	67"	143	1009R2632	32"	67"	166	1009R3232	32"	67"	195
10 STEP WITH HANDRAILS	100"	130"	166"	--	--	--	--	1010R2632	32"	74"	179	1010R3232	32"	74"	211
11 STEP WITH HANDRAILS	110"	140"	176"	--	--	--	--	1011R2632	32"	81"	191	1011R3232	32"	81"	226
12 STEP WITH HANDRAILS	120"	162"	186"	--	--	--	--	1012R2632	32"	88"	215	1012R3232	32"	88"	250

SERIES 1500

Partially-Assembled, Standard Angle Ladders

COTTERMAN® SERIES 1500 is the "assembly required" version of our 1000 series. Packaged for shipping at a lower freight class, the ladders require approx. 15 - 30 minutes to assemble, depending on size. This series has the most selection of all of our products, ranging from three to sixteen steps.

- 450 lb. load rating.
- 59° climb angle.
- All tube members are 1" steel tube construction.
- Steps are 7" deep in your choice of tread.
- Top steps are 10", 20" or 30" deep.
- Spring-loaded 2" casters are used on 3 & 4 step ladders. The Cotterman® SafeLock is used on 5 step ladders and above.
- Gray powder coat is the standard finish.
- Series 1500 ladders meet applicable OSHA and ANSI standards.
- CAL-OSHA models also available.



1511R2632A1
(WITH 20" DEEP TOP STEP)



1514R2642A6



**LOAD RATING
450 LBS.**

SERIES 1500 Rolling Metal Ladders MODEL NUMBERS & MEASUREMENTS

DESCRIPTION	TOP STEP HEIGHT	OVERALL HEIGHT	WORKING HEIGHT (approx.)	16" TREAD WIDTH			24" TREAD WIDTH			30" TREAD WIDTH (A6 not available)					
				MODEL NUMBER	BASE WIDTH	BASE LENGTH	SHP. WT. LBS.	MODEL NUMBER	BASE WIDTH	BASE LENGTH	SHP. WT. LBS.	MODEL NUMBER	BASE WIDTH	BASE LENGTH	SHP. WT. LBS.
3 STEP WITH HANDRAILS	30"	60"	96"	1503R1820	20"	26"	52	1503R2630	30"	26"	60	--	--	--	--
4 STEP WITH HANDRAILS	40"	70"	106"	1504R1820	20"	31"	61	1504R2630	30"	31"	71	1504R3232	32"	31"	86
5 STEP WITH HANDRAILS	50"	80"	116"	1505R1820	20"	40"	93	1505R2630	30"	40"	109	1505R3232	32"	40"	126
6 STEP WITH HANDRAILS	60"	90"	126"	1506R1824	24"	46"	110	1506R2630	30"	46"	126	1506R3232	32"	46"	147
7 STEP WITH HANDRAILS	70"	100"	136"	1507R1824	24"	53"	120	1507R2630	30"	53"	138	1507R3232	32"	53"	162
8 STEP WITH HANDRAILS	80"	110"	146"	--	--	--	--	1508R2632	32"	61"	161	1508R3232	32"	61"	187
9 STEP WITH HANDRAILS	90"	120"	156"	--	--	--	--	1509R2632	32"	67"	174	1509R3232	32"	67"	202
10 STEP WITH HANDRAILS	100"	130"	166"	--	--	--	--	1510R2632	32"	74"	186	1510R3232	32"	74"	218
11 STEP WITH HANDRAILS	110"	140"	176"	--	--	--	--	1511R2632	32"	81"	199	1511R3232	32"	81"	233
12 STEP LADDERS AND UP REQUIRE A PALLET FOR SHIPPING AT ADDITIONAL COST.															
12 STEP WITH HANDRAILS	120"	162"	188"	--	--	--	--	1512R2632	32"	88"	299	1512R3232	32"	88"	355
13 STEP WITH HANDRAILS	130"	172"	198"	--	--	--	--	1513R2642	42"	95"	329	1513R3242	42"	95"	390
14 STEP WITH HANDRAILS	140"	182"	208"	--	--	--	--	1514R2642	42"	101"	350	1514R3242	42"	101"	415
15 STEP WITH HANDRAILS	150"	192"	218"	--	--	--	--	1515R2642	42"	108"	407	1515R3242	42"	108"	439
16 STEP WITH HANDRAILS	160"	202"	228"	--	--	--	--	1516R2642	42"	114"	430	1516R3242	42"	114"	463



Easy 50

1208R2632A3
(WITH 24" DEEP TOP STEP)



1203R1820A2



SERIES 1200 & 1700

Easy 50° Climbing Angle Ladders

THE SERIES 1200 ships ready-to-use up to 8 steps.

THE SERIES 1700 are 9 step and above and are shipped partially assembled.

- 450 lb. load rating.
- 50° climb angle.
- All tube members are 1" steel tube construction.
- Steps are 7" deep in your choice of tread.
- Top steps are 12" or 24" deep.
- Spring-loaded 2" casters are used on 3 & 4 step ladders. The Cotterman® SafeLock is used on 5 step ladders and above.
- Gray powder coat is the standard finish.
- Series 1200 & 1700 ladders meet applicable OSHA and ANSI standards.
- CAL-OSHA models also available.

SERIES 1200 ships fully-assembled • SERIES 1700 ships partially-assembled

**LOAD RATING
450 LBS.**

DESCRIPTION	TOP STEP HEIGHT	OVERALL HEIGHT	WORKING HEIGHT (approx.)	16" TREAD WIDTH			24" TREAD WIDTH			30" TREAD WIDTH (PERFORATED TREAD NOT AVAILABLE)					
				MODEL NUMBER	BASE WIDTH	BASE LENGTH	WEIGHT LBS.	MODEL NUMBER	BASE WIDTH	BASE LENGTH	WEIGHT LBS.	MODEL NUMBER	BASE WIDTH	BASE LENGTH	WEIGHT LBS.
3 STEP NO HANDRAILS	30"	30"	96"	1203N1820	20"	32"	39	1203N2630	30"	32"	46	--	--	--	
3 STEP WITH HANDRAILS	30"	60"	96"	1203R1820	20"	32"	46	1203R2630	30"	32"	54	--	--	--	
4 STEP NO HANDRAILS	40"	40"	106"	1204N1820	20"	40"	49	1204N2630	30"	40"	58	1204N3232	32"	40"	67
4 STEP WITH HANDRAILS	40"	70"	106"	1204R1820	20"	40"	56	1204R2630	30"	40"	65	1204R3232	32"	40"	79
5 STEP WITH HANDRAILS	50"	80"	116"	1205R1820	20"	51"	86	1205R2630	30"	51"	100	1205R3232	32"	51"	116
6 STEP WITH HANDRAILS	60"	90"	126"	1206R1824	24"	60"	108	1206R2630	30"	60"	123	1206R3232	32"	60"	143
7 STEP WITH HANDRAILS	70"	100"	136"	1207R1824	24"	69"	125	1207R2630	30"	69"	142	1207R3232	32"	69"	165
8 STEP WITH HANDRAILS	80"	110"	146"	1208R1824	24"	78"	139	1208R2632	32"	78"	159	1208R3232	32"	78"	184
9 STEP WITH HANDRAILS	90"	120"	156"	--	--	--	--	1709R2632	32"	87"	187	1709R3232	32"	87"	216
10 STEP WITH HANDRAILS	100"	130"	166"	--	--	--	--	1710R2632	32"	97"	200	1710R3232	32"	97"	233
11 STEP WITH HANDRAILS	110"	140"	176"	--	--	--	--	1711R2632	32"	106"	213	1711R3232	32"	106"	249
12 STEP LADDERS AND UP REQUIRE A PALLET FOR SHIPPING AT ADDITIONAL COST.															
12 STEP WITH HANDRAILS	120"	162"	186"	--	--	--	--	1712R2632	32"	116"	338	1712R3232	32"	116"	377
13 STEP WITH HANDRAILS	130"	172"	196"	--	--	--	--	1713R2642	44"	125"	371	1713R3242	44"	125"	413
14 STEP WITH HANDRAILS	140"	182"	206"	--	--	--	--	1714R2642	44"	134"	392	1714R3242	44"	134"	437
15 STEP WITH HANDRAILS	150"	192"	216"	--	--	--	--	1715R2642	44"	143"	415	1715R3242	44"	143"	463

SERIES 2600 Heavy Duty Ladders

COTTERMAN® SERIES 2600 is a superior line of partially assembled steel safety ladders. Designed and constructed for extra heavy duty use, these ladders have extra bracing and heavier materials to resist damage. They are available in 6-15 step sizes.

- 800 lb load rating.
- 50° climb angle.
- Larger 1¼" diameter tube base and back construction.
- 2½" rubber pads on front legs.
- 7" deep steps, 12" or 24" deep top step.
- Ladders are equipped with the Cotterman® SafeLock caster system.
- Gray powder coat is the standard finish.
- Series 2600 ladders meet OSHA and ANSI standards.
- CAL-OSHA models also available.

Easy **50**



2608R2632A6



**LOAD RATING
800 LBS.**

SERIES 2600 MODEL NUMBERS & MEASUREMENTS

DESCRIPTION	TOP STEP HEIGHT	OVERALL HEIGHT	WORKING HEIGHT (approx.)	24" TREAD WIDTH			30" TREAD WIDTH (A6 not available)				
				MODEL NUMBER	BASE WIDTH	BASE LENGTH	SHP. WT. LBS.	MODEL NUMBER	BASE WIDTH	BASE LENGTH	SHP. WT. LBS.
6 STEP WITH HANDRAILS	60"	90"	126"	2606R2630	30"	60"	132	--	--	--	
7 STEP WITH HANDRAILS	70"	100"	136"	2607R2630	30"	69"	144	--	--	--	
8 STEP WITH HANDRAILS	80"	110"	146"	2608R2632	32"	78"	170	--	--	--	
9 STEP WITH HANDRAILS	90"	120"	156"	2609R2632	32"	87"	193	2609R3232	32"	87"	223
10 STEP WITH HANDRAILS	100"	130"	166"	2610R2632	32"	97"	207	2610R3232	32"	97"	240
11 STEP WITH HANDRAILS	110"	140"	176"	2611R2632	32"	106"	222	2611R3232	32"	106"	257
12 STEP LADDERS AND UP REQUIRE A PALLET FOR SHIPPING AT ADDITIONAL COST.											
12 STEP WITH HANDRAILS	120"	162"	186"	2612R2632	32"	116"	327	2612R3232	32"	116"	384
13 STEP WITH HANDRAILS	130"	172"	196"	2613R2642	42"	125"	358	2613R3242	42"	125"	420
14 STEP WITH HANDRAILS	140"	182"	206"	2614R2642	42"	134"	379	2614R3242	42"	134"	445
15 STEP WITH HANDRAILS	150"	192"	216"	2615R2642	42"	143"	401	2615R3242	42"	143"	472



5TAP SAFETY YELLOW (C2)

Trailer Access Platform

Easy access to trailers and cube vans

THE TRAILER ACCESS LADDER offers easy entry to tractor trailers and cube vans in places where loading docks and bays are not available or convenient. The ladder can be moved easily on two (2) 10" solid rubber rear wheels and is provided with slip resistant heavy duty serrated treads.

- 800 lb. load rating.
- 50° climb angle.
- Steps and platform are constructed of heavy-duty non-slip serrated tread, supported by 1" O.D. tubular frame.
- Handrails with removable snap hook chains.
- Platform size is 24"x24". Step width is 24".
- Two heavy-duty 10" solid rubber rear wheels with large 2½" rubber pads on front legs.
- Gray powder coat finish is standard.
- Trailer access platforms meet applicable OSHA and ANSI standards.
- Cal-OSHA models also available.



4TAP

6TAP



**LOAD RATING
800 LBS.**

Trailer Access Platform

MODEL NUMBERS & MEASUREMENTS

DESCRIPTION	TOP STEP HEIGHT	OVERALL HEIGHT	WORKING HEIGHT (approx.)	24" TREAD WIDTH			
				MODEL NUMBER	BASE WIDTH	BASE LENGTH	SHP. WT. LBS.
3 STEP WITH HANDRAILS	30"	60"	96"	3TAP2424RA3	32"	48"	86
4 STEP WITH HANDRAILS	40"	70"	106"	4TAP2424RA3	32"	55"	101
5 STEP WITH HANDRAILS	50"	86"	116"	5TAP2424RA3	32"	63"	119
6 STEP WITH HANDRAILS	60"	96"	126"	6TAP2424RA3	32"	72"	136
7 STEP WITH HANDRAILS	70"	106"	136"	7TAP2424RA3	32"	80"	151

- 3-4 Step - 30" handrail
- 5-7 Step - 36" handrail



R2C
READY TO CLIMB
zero assembly time.

SERIES

"A"



A3R2630A4



A5R2630A4



A3N1822A3

SERIES "A"

Welded Aluminum Ladders

COTTERMAN® ALUMINUM SERIES "A" LADDERS ship set-up and ready-to-use.

In addition to being lightweight, aluminum ladders are corrosion resistant and unpainted. They are also non-magnetic.

- 350 lb. load rating.
- Both the steps and the top step are 16" or 24" wide. The steps are 7" deep. The top step is 14" deep.
- All ladders are provided with 2" spring-loaded casters.
- Unpainted, aluminum finish.
- Series "A" aluminum ladders meet applicable OSHA and ANSI standards.
- Cal-OSHA models also available.



MADE IN U.S.A.

Series "A" Available Treads



Ribbed (A4)



Serrated (A3)

SERIES "A" MODEL NUMBERS & MEASUREMENTS

DESCRIPTION	TOP STEP HEIGHT	OVERALL HEIGHT	WORKING HEIGHT (approx.)	16" TREAD WIDTH			24" TREAD WIDTH				
				MODEL NUMBER	BASE WIDTH	BASE LENGTH	SHP. WT. LBS.	MODEL NUMBER	BASE WIDTH	BASE LENGTH	SHP. WT. LBS.
1 STEP NO HANDRAILS	12"	12"	78"	A1N1818	18"	20"	13	A1N2626	26"	20"	14
2 STEP NO HANDRAILS	20"	20"	86"	A2N1818	18"	23"	16	A2N2626	26"	23"	20
2 STEP WITH HANDRAILS	20"	50"	86"	A2R1818	18"	23"	19	A2R2626	26"	23"	21
3 STEP NO HANDRAILS	30"	30"	96"	A3N1822	22"	29"	21	A3N2630	30"	29"	25
3 STEP WITH HANDRAILS	30"	60"	96"	A3R1822	22"	29"	24	A3R2630	30"	29"	27
4 STEP NO HANDRAILS	40"	40"	106"	A4N1822	22"	36"	26	A4N2630	30"	36"	30
4 STEP WITH HANDRAILS	40"	70"	106"	A4R1822	22"	36"	28	A4R2630	30"	36"	32
5 STEP WITH HANDRAILS	50"	80"	116"	A5R1822	22"	43"	35	A5R2630	30"	43"	39
6 STEP WITH HANDRAILS	60"	90"	126"	A6R1824	24"	50"	39	A6R2630	30"	50"	44
7 STEP WITH HANDRAILS	70"	100"	136"	--	--	--	--	A7R2630	30"	57"	54
8 STEP WITH HANDRAILS	80"	110"	146"	--	--	--	--	A8R2630	30"	63"	61

LOAD RATING
350 LBS.



R2C
READY TO CLIMB
zero assembly time.

aluminum
**WHEELBARROW
LADDER**



Aluminum Wheelbarrow Ladder

Easy-Rolling Welded Aluminum Safety Ladders

COTTERMAN® ALUMINUM WHEELBARROW LADDERS
Lightweight lift-and-roll design with 10" rubber wheels for easy portability, even on rough surfaces.

In addition to being lightweight, aluminum wheel barrow ladders are corrosion resistant and unpainted. They are also non-magnetic.

- 350 lb. load rating.
- Both the steps and the top step are 16" or 24" wide. The steps are 7" deep. Top step is 14" deep.
- 10" diameter rear wheels.
- Unpainted, aluminum finish.
- Aluminum Wheelbarrow ladders meet applicable OSHA and ANSI standards.
- Cal-OSHA models also available.

Aluminum Wheelbarrow Ladder Available Treads



Ribbed (A4)



Serrated (A3)

Aluminum Wheelbarrow Ladder

MODEL NUMBERS & MEASUREMENTS

DESCRIPTION	TOP STEP HEIGHT	OVERALL HEIGHT	WORKING HEIGHT (approx.)	16" TREAD WIDTH			24" TREAD WIDTH				
				MODEL NUMBER	BASE WIDTH	BASE LENGTH	SHP. WT. LBS.	MODEL NUMBER	BASE WIDTH	BASE LENGTH	SHP. WT. LBS.
5 STEP WITH HANDRAILS	50"	80"	116"	AW05R1830	30"	48"	56	AW05R2636	36"	48"	62
6 STEP WITH HANDRAILS	60"	90"	126"	AW06R1830	30"	55"	61	AW06R2636	36"	55"	68
7 STEP WITH HANDRAILS	70"	100"	136"	AW07R1830	30"	62"	66	AW07R2636	36"	62"	74
8 STEP WITH HANDRAILS	80"	110"	146"	--	--	--	--	AW08R2636	36"	68"	80
9 STEP WITH HANDRAILS	90"	120"	156"	--	--	--	--	AW09R2636	36"	75"	86
10 STEP WITH HANDRAILS	100"	130"	166"	--	--	--	--	AW10R2636	36"	81"	92



**LOAD RATING
350 LBS.**



R2C
READY TO CLIMB
zero assembly time.

TILT 'n ROLL



TILT N ROLL®

Rolling Ladder

THE TiltNRoll® features a special balanced design that allows it to tilt easily to the rolling position when pulled toward the user. The user is not required to extend a foot to assist in tilting the ladder to the rolling position. Once tilted, the ladder can be easily moved from job to job on the two 4" diameter wheels.

TiltNRoll® ladders are one-piece welded assemblies shipped ready-to-use. The ladders are supplied with handrails that extend 30" above the top step.

- Steel - 450 lb. load rating.
- Aluminum - 350 lb. load rating.
- 59° climb angle.
- Rests on four 2½" rubber pads.
- 7" deep steps with 10" deep top step (standard), 20" deep top step available.
- Gray powder coat is the standard finish.
- Arrives ready to use.
- TiltNRoll® ladders meet applicable OSHA and ANSI standards.
- Cal-OSHA models also available.



TiltNRoll® MODEL NUMBERS & MEASUREMENTS

 **LOAD RATING 450 LBS.**
ALUMINUM - 350 LBS.
MADE IN U.S.A.

NO. OF STEPS	TOP STEP HEIGHT	OVERALL HEIGHT	WORKING HEIGHT (approx.)	16" Wide x 10" Deep Top Step			24" Wide x 10" Deep Top Step			16" Wide x 20" Deep Top Step			24" Wide x 20" Deep Top Step						
				MODEL NUMBER	BASE WIDTH	BASE LENGTH	SHR. WT. LBS.	MODEL NUMBER	BASE WIDTH	BASE LENGTH	SHR. WT. LBS.	MODEL NUMBER	BASE WIDTH	BASE LENGTH	SHR. WT. LBS.	MODEL NUMBER	BASE WIDTH	BASE LENGTH	SHR. WT. LBS.
POWDER COATED STEEL standard color, gray. Available in multiple colors.																			
2 STEP	20"	50"	86"	2TR18	20"	24"	38	2TR26	28"	24"	43	2TR18E2	20"	34"	49	2TR26E2	28"	34"	60
3 STEP	30"	60"	96"	3TR18	20"	31"	47	3TR26	28"	31"	55	3TR18E2	20"	41"	62	3TR26E2	28"	41"	71
4 STEP	40"	70"	106"	4TR18	20"	37"	58	4TR26	28"	37"	66	4TR18E2	20"	47"	72	4TR26E2	28"	47"	83
5 STEP	50"	80"	116"	5TR18	20"	43"	68	5TR26	28"	43"	78	5TR18E2	20"	53"	82	5TR26E2	28"	53"	94
#304 STAINLESS STEEL sand blasted satin finish.																			
2 STEP	20"	50"	86"	2TS18	20"	24"	54	2TS26	28"	24"	68	2TS18E2	20"	34"	59	2TS26E2	28"	34"	75
3 STEP	30"	60"	96"	3TS18	20"	31"	71	3TS26	28"	31"	86	3TS18E2	20"	41"	77	3TS26E2	28"	41"	95
4 STEP	40"	70"	106"	4TS18	20"	37"	88	4TS26	28"	37"	103	4TS18E2	20"	47"	97	4TS26E2	28"	47"	113
5 STEP	50"	80"	116"	5TS18	20"	43"	106	5TS26	28"	43"	117	5TS18E2	20"	53"	116	5TS26E2	28"	53"	133
ALUMINUM 6061-T6 high strength alloy. Serrated tread.																			
2 STEP	20"	50"	86"	2TA18A3	20"	24"	16	2TA26A3	28"	24"	19	2TA18A3E2	20"	34"	21	2TA26A3E2	28"	34"	24
3 STEP	30"	60"	96"	3TA18A3	20"	31"	23	3TA26A3	28"	31"	24	3TA18A3E2	20"	41"	26	3TA26A3E2	28"	41"	30
4 STEP	40"	70"	106"	4TA18A3	20"	37"	26	4TA26A3	28"	37"	29	4TA18A3E2	20"	47"	30	4TA26A3E2	28"	47"	35
5 STEP	50"	80"	116"	5TA18A3	20"	43"	30	5TA26A3	28"	43"	34	5TA18A3E2	20"	53"	35	5TA26A3E2	28"	53"	40

AVAILABLE TREADS: Expanded Steel (A1)- Steel, Stainless Steel • Serrated (A3) Steel, Stainless Steel & Aluminum • Perforated (A6) Steel only

STRADDLE BASE TILT 'N ROLL®

Rolling Ladder

THE STRADDLE BASE TILT 'N ROLL® allows the front and rear of the ladder to straddle any obstructions, allowing the user to climb the ladder in tight spaces. Durable gray powder coat finish is standard. The rated load capacity is 350 lbs.

MODEL NUMBERS & MEASUREMENTS

NO. OF STEPS	TOP STEP HEIGHT	OVERALL HEIGHT	WORKING HEIGHT (approx.)	PLATFORM SIZE 24" X 20"			
				MODEL NUMBER	BASE WIDTH	BASE LENGTH	SHP. WT. LBS.
3 STEP	30"	60"	96"	3STR	28"	41"	70
4 STEP	40"	70"	106"	4STR	28"	47"	86
5 STEP	50"	80"	116"	5STR	28"	53"	97
6 STEP	60"	90"	126"	6STR	28"	60"	110



SERIES 6500

Welded Steel Roll-n-Fold Ladder

THE COTTERMAN® SERIES 6500 ROLL-N-FOLD LADDER is a portable steel rolling ladder that can be folded for transporting or storage. The rear of the ladder has large 10" rubber wheels for easy portability, even on rough surfaces. Rubber pads on the front legs hold the ladder secure during use. 5 to 9 step ladders are moved by tilting and rolling it like a wheelbarrow. The B4 SafeLock is standard on 10-16 step models, but also available as an additional option on 5-9 step models.



SERIES 6500 MODEL NUMBERS & MEASUREMENTS

DESCRIPTION	TOP STEP HEIGHT	OVERALL HEIGHT	WORKING HEIGHT (approx.)	16" TREAD WIDTH			
				MODEL NUMBER	BASE WIDTH	BASE LENGTH	SHP. WT. LBS.
5 STEP WITH HANDRAILS	50"	80"	146"	6505R1830	30"	46"	95
6 STEP WITH HANDRAILS	60"	90"	156"	6506R1830	30"	53"	114
7 STEP WITH HANDRAILS	70"	100"	166"	6507R1830	30"	58"	126
8 STEP WITH HANDRAILS	80"	110"	176"	6508R1830	30"	65"	140
9 STEP WITH HANDRAILS	90"	120"	186"	6509R1830	30"	72"	152
10 STEP WITH HANDRAILS	100"	130"	196"	6510R1830	30"	78"	183
11 STEP WITH HANDRAILS	110"	140"	206"	6511R1830	30"	86"	195
12 STEP WITH HANDRAILS	120"	162"	216"	6512R1830	30"	92"	309
13 STEP WITH HANDRAILS	130"	172"	226"	6513R1840	40"	99"	344
14 STEP WITH HANDRAILS	140"	182"	236"	6514R1840	40"	106"	363
15 STEP WITH HANDRAILS	150"	192"	246"	6515R1840	40"	112"	385
16 STEP WITH HANDRAILS	160"	202"	256"	6516R1840	40"	119"	405

**LOAD RATING
450 LBS.**



- 450 lb. load rating.
- 59° climb angle.
- Rigid 1" O.D. tubular frame is designed to be folded. (*folding requires removal of 2-4 bolts*)
- Treads are 7" deep and 16" wide. The standard top step is 10" deep and 16" wide, deep tops are 20" deep by 16" wide.
- Large 10" diameter solid rubber wheels.
- Ships partially-assembled.
- Series 6500 ladders meet applicable OSHA and ANSI standards.
- Cal-OSHA models also available.

FIRST THING'S FIRST

"HOW TO SELECT THE CORRECT LADDER!"

1 LADDER DIMENSIONS



Working height is the approximate height that you would like to be able to comfortably reach. It is usually calculated as 5.5' above the ladder's platform height.

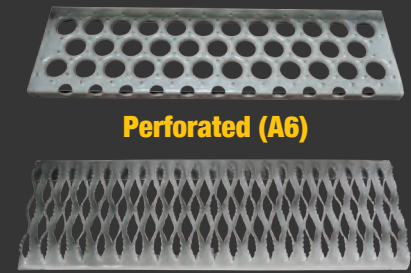
Overall height is VERY important. You want to be sure that your ladder will not be too tall to fit into your workspace. This includes being able to fit through any doors that you may need to move it through, or under any ceilings or fixtures that you may have.

Top Step height is the measurement of the top step from the ground. It's important that this measurement is not too far above or below your desired working height.

Base length is the measurement of how long the base of the ladder runs. This is dependent upon the height of the ladder. The taller the ladder, the longer the base.

Base width is also very important because as ladders get taller, the base width increases. It is important to be sure that the ladder will not be too wide for your workspace.

2 TREAD TYPES



Perforated (A6)

Serrated (A3)

3 GATE OPTION



Optional Safety Gate

Available on all 4 sides of the platform. (NOT AVAILABLE ON ALUMINUM WMX MODELS)



WORKMASTER™ Super Duty Ladder



WMX05R37A9P3

Super Duty

Rolling Steel Ladder

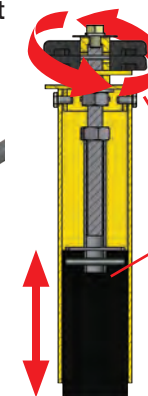
For the workspace that demands the toughest ladder, the Super Duty Workmaster™ ladder.

Every day, work is done where equipment needs to be able to take a beating and keep working. For the toughest jobs, Cotterman® introduces the Super Duty Workmaster™ ladder. Built with extra heavy duty components, the Workmaster™ ladder is resistant to bumps and dings in harsh work environments.

- 1,000 lb. load rating.
- 59° climb angle.
- 1½" diameter x 14 gauge tube construction.
- 24" x 24" platform with optional self-closing gates (available for all 4 sides of platform).
- Adjustable front legs level the ladder.
- Two-tone powder coat finish creates high visibility.
- Standard back peg board.
- Workmaster™ Super Duty ladders meet applicable OSHA and ANSI standards.



Modular Front Leg and SafeLock
Field Replaceable, Adjustable Front Legs
that level the Ladder



Easily adjust Rubber Foot Pad to level the ladder or compensate for wear

2" x 2" x 5" Adjustable Rubber Foot Pad



Workmaster™ Super-Duty Ladder MODEL NUMBERS & MEASUREMENTS

**LOAD RATING
1,000 LBS.**



DESCRIPTION	TOP STEP HEIGHT	OVERALL HEIGHT	WORKING HEIGHT (approx.)	SERRATED TREAD			PERFORATED TREAD				
				MODEL NUMBER	BASE WIDTH	BASE LENGTH	SHP. WT. LBS.	MODEL NUMBER	BASE WIDTH	BASE LENGTH	SHP. WT. LBS.
5 STEP WITH HANDRAILS	50"	92"	116"	WMX05R37A3P3	37"	56"	297	WMX05R37A6P3	37"	56"	301
6 STEP WITH HANDRAILS	60"	102"	126"	WMX06R37A3P3	37"	62"	314	WMX06R37A6P3	37"	62"	318
7 STEP WITH HANDRAILS	70"	112"	136"	WMX07R37A3P3	37"	68"	343	WMX07R37A6P3	37"	68"	347
8 STEP WITH HANDRAILS	80"	122"	146"	WMX08R37A3P3	37"	74"	360	WMX08R37A6P3	37"	74"	364
9 STEP WITH HANDRAILS	90"	132"	156"	WMX09R37A3P3	37"	80"	380	WMX09R37A6P3	37"	80"	384
10 STEP WITH HANDRAILS	100"	142"	166"	WMX10R37A3P3	37"	86"	397	WMX10R37A6P3	37"	86"	401
11 STEP WITH HANDRAILS	110"	152"	176"	WMX11R42A3P3	42"	92"	423	WMX11R42A6P3	42"	92"	427
12 STEP WITH HANDRAILS	120"	162"	186"	WMX12R42A3P3	42"	98"	440	WMX12R42A6P3	42"	98"	444

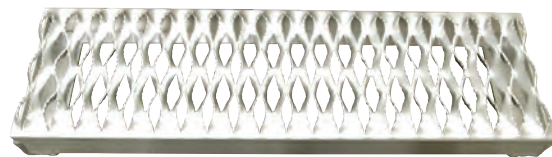
PATENTED
Pat. # US 9,206,643 B2



aluminum Workmaster™ Super-Duty Ladder

THE COTTERMAN® ALUMINUM WORKMASTER™ is a lightweight, Super Duty ladder that can be easily moved from job to job. It's sturdy aluminum construction allows for a 500 lb. load rating and can handle the rigors of a rough or tough work environment.

- 1½" diameter x 14 gauge tube construction.
- Adjustable front legs and first step assembly made from steel.
- 24" x 24" platform.
- Workmaster™ Super Duty ladder meet applicable OSHA and ANSI standards.



Serrated (A3)

Open step serrated surface. For rugged applications.



Aluminum Workmaster™ Super-Duty Ladder

**LOAD RATING
500 LBS.**

DESCRIPTION	TOP STEP HEIGHT	OVERALL HEIGHT	WORKING HEIGHT (approx.)	GRIP STRUT TREAD			
				MODEL NUMBER	BASE WIDTH	BASE LENGTH	SHP. WT. LBS.
5 STEP WITH HANDRAILS	50"	92"	116"	WMXA05R37A3P3	37"	56"	175
6 STEP WITH HANDRAILS	60"	102"	126"	WMXA06R37A3P3	37"	62"	210
7 STEP WITH HANDRAILS	70"	112"	136"	WMXA07R37A3P3	37"	68"	245
8 STEP WITH HANDRAILS	80"	122"	146"	WMXA08R37A3P3	37"	74"	280
9 STEP WITH HANDRAILS	90"	132"	156"	WMXA09R37A3P3	37"	80"	315
10 STEP WITH HANDRAILS	100"	142"	166"	WMXA10R37A3P3	37"	86"	350
11 STEP WITH HANDRAILS	110"	152"	176"	WMXA11R42A3P3	42"	92"	385
12 STEP WITH HANDRAILS	120"	162"	186"	WMXA12R42A3P3	42"	98"	420

1 LADDER DIMENSIONS

FIRST THING'S FIRST

"HOW TO SELECT THE CORRECT LADDER!"



Working height is the approximate height that you would like to be able to comfortably reach. It is usually calculated at 5.5' above the ladder's platform height.

Overall height is VERY important. You want to be sure that your ladder will not be too tall to fit into your workspace. This includes being able to fit through any doors that you may need to move it through, or under any ceilings or fixtures that you may have.

Top Step height is the measurement of the top step from the ground. It's important that this measurement is not too far above or below your desired working height.

Base length is the measurement of how long the base of the ladder runs. This is dependent upon the height of the ladder. The taller the ladder, the longer the base.

Base width It is important to be sure that the ladder will not be too wide for your workspace.

2 TREAD TYPES



Perforated (A6) Steel Only



Vinyl (A2)



Serrated (A3)



Perforated (A10) Aluminum Models only

COLOR OPTIONS

Cotterman® offers a variety of powder-coated colors to suit your needs. Choose from any of the following 11 colors.





steel
**Stock
 'n
 Store**
 Folding Rolling Ladders



Folding Rolling Ladders for Office, Retail, and Industrial use, easy-to-store and ready-to-use

THE COTTERMAN® StockNStore™ This lightweight ladder easily folds into a compact assembly for quick rolling movement and storage. In use, the ladder opens smoothly during the transition from rolling to setting down on rubber feet. The hinges automatically lock in place. For added convenience, the ladder tilts and rolls in the open as well as closed position.

- 350 lb. load rating.
- Available in 2, 3 and 4 step models, all with 16" wide by 7" deep steps and 10" deep top step.
- Easily folded in one simple motion.
- PVC coated aircraft cable release system.
- Rolls in folded form or in setup form.
- Compact and easily stored.
- Gray powder coat finish is standard. Available in a variety of colors.
- Three tread types available.
- 4" casters.
- 30" handrails.
- Ships parcel freight.
- StockNStore™ ladders meet applicable OSHA and ANSI standards.



FOLDS FLAT FOR COMPACT STORAGE ALMOST ANYWHERE!



SAS3A2 (RED C6)

R2C
 READY TO CLIMB
 zero assembly time.



Cable release system for weight activated hinges with no pinch points

StockNStore™ (steel)

MODEL NUMBERS & MEASUREMENT



DESCRIPTION	TREAD	TOP STEP HEIGHT	OVERALL HEIGHT	WORKING HEIGHT (approx.)	16" TREAD WIDTH			
					MODEL NUMBER	BASE WIDTH	BASE LENGTH	SHP. WT. LBS.
2 STEP WITH HANDRAILS	PERFORATED	20"	50"	86"	SAS2A6	21"	22"	33
3 STEP WITH HANDRAILS	PERFORATED	30"	60"	96"	SAS3A6	21"	28"	40
4 STEP WITH HANDRAILS	PERFORATED	40"	70"	106"	SAS4A6	21"	34"	48
2 STEP WITH HANDRAILS	RIBBED VINYL	20"	50"	86"	SAS2A2	21"	22"	37
3 STEP WITH HANDRAILS	RIBBED VINYL	30"	60"	96"	SAS3A2	21"	28"	46
4 STEP WITH HANDRAILS	RIBBED VINYL	40"	70"	106"	SAS4A2	21"	34"	55
2 STEP WITH HANDRAILS	SERRATED	20"	50"	86"	SAS2A3	21"	22"	35
3 STEP WITH HANDRAILS	SERRATED	30"	60"	96"	SAS3A3	21"	28"	43
4 STEP WITH HANDRAILS	SERRATED	40"	70"	106"	SAS4A3	21"	34"	51



aluminum Stock 'n Store

Lightweight, Folding Rolling Ladders

THE COTTERMAN® ALUMINUM StockNStore™ ladder provides all of the advantages of the steel StockNStore™, but with lightweight aluminum construction. The Aluminum StockNStore™ is ideal for tight spaces where quick, easy access and quick, easy storage are required.

- 350 lb. load rating.
- Available in 2, 3 and 4 step models, all with 16" wide by 7" deep steps and 10" deep top step.
- Easily folded in one simple motion.
- PVC coated aircraft cable release system.
- Rolls in folded form or in setup form.
- Compact and easily stored.
- Unpainted, aluminum finish is standard. Available in a variety of colors.
- Three tread types available.
- 4" casters.
- 30" handrails with cross tube.
- Ships parcel freight.
- StockNStore™ ladders meet applicable OSHA and ANSI standards.



LOAD RATING
350 LBS.

StockNStore™ (aluminum) MODEL NUMBERS & MEASUREMENTS

DESCRIPTION	TREAD	TOP STEP HEIGHT	OVERALL HEIGHT	WORKING HEIGHT (approx.)	16" TREAD WIDTH			
					MODEL NUMBER	BASE WIDTH	BASE LENGTH	SHP. WT. LBS.
2 STEP WITH HANDRAILS	PERFORATED	20"	50"	86"	SASA2A10	21"	22"	17
3 STEP WITH HANDRAILS	PERFORATED	30"	60"	96"	SASA3A10	21"	28"	25
4 STEP WITH HANDRAILS	PERFORATED	40"	70"	106"	SASA4A10	21"	34"	32
2 STEP WITH HANDRAILS	RIBBED VINYL	20"	50"	86"	SASA2A2	21"	22"	18
3 STEP WITH HANDRAILS	RIBBED VINYL	30"	60"	96"	SASA3A2	21"	28"	26
4 STEP WITH HANDRAILS	RIBBED VINYL	40"	70"	106"	SASA4A2	21"	34"	33
2 STEP WITH HANDRAILS	SERRATED	20"	50"	86"	SASA2A3	21"	22"	14
3 STEP WITH HANDRAILS	SERRATED	30"	60"	96"	SASA3A3	21"	28"	21
4 STEP WITH HANDRAILS	SERRATED	40"	70"	106"	SASA4A3	21"	34"	29

WORK STANDS / PLATFORMS

FIRST THING'S FIRST "HOW TO SELECT THE CORRECT PLATFORM!"

1 LADDER DIMENSIONS

Working height is the approximate height that you would like to be able to comfortably reach. It is usually calculated at 5.5' above the platform height.

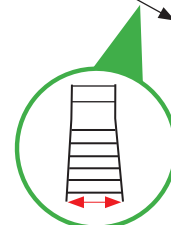


Overall height is VERY important. You want to be sure that your Work Platform will not be too tall to fit into your workspace. This includes being able to fit through any doors that you may need to move it through, or under any ceilings or fixtures that you may have.



Platform Height is the measurement of the top platform from the ground. It's important that this measurement is not too far above or below your desired working height.

Base length is the measurement of how long the base of the Work Platform runs. This is dependent upon the height of the ladder. The taller the Work Platform, the longer the base.

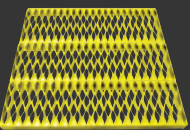


Base width It is important to be sure that the Work Platform will not be too wide for your workspace. We offer 2 tread widths to accommodate most work areas.

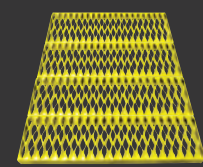
2 PLATFORM DEPTH



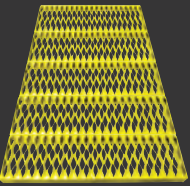
24" Platform SERIES WP



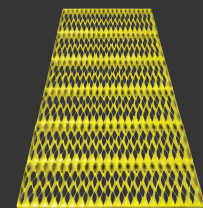
36" Platform SERIES WP



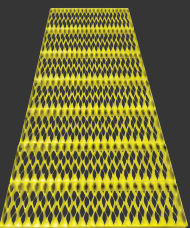
48" Platform SERIES WP & DWP



60" Platform SERIES WP & DWP



72" Platform SERIES WP & DWP



84" Platform SERIES DWP

3 PLATFORM/STEP WIDTH



24" Step



36" Step

COLOR OPTIONS

Cotterman® offers a variety of powder-coated colors to suit your needs. Choose from any of the following 11 colors.





welded steel WORK PLATFORMS



6WP3648RA3B4
(WITH 48" PLATFORM)

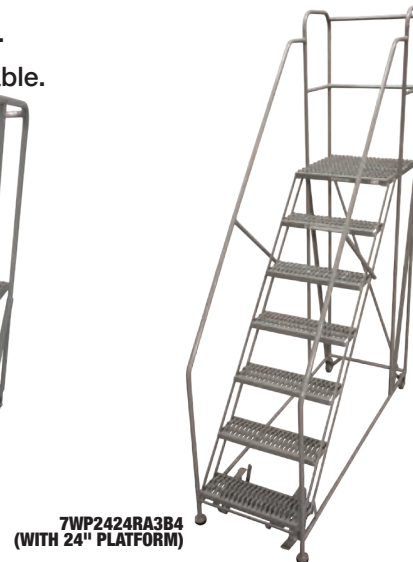
SERIES "WP" Heavy Duty, Welded Steel Work Platforms

THE COTTERMAN® SERIES WP Work Platforms have a higher load capacity and larger platform for two people, plus tools. 24" platform depths have a 1-person capacity.

- 800 lb. load rating.
- 50° climb angle.
- Rests on two 2½" rubber pads.
- Two 4" rigid heavy duty casters on the rear are standard. The optional Cotterman® SafeLock on the step side provides greater mobility.
- Steps and platforms are constructed of heavy duty serrated tread.
- 36" high handrails with midrail are standard on 5 thru 7 step models. 30" handrails optional on 2 thru 4 step models.
- Work Platforms meet applicable OSHA and ANSI standards.
- Special designs are available.
- Cal-OSHA models also available.



3WP2424RA3B4
(WITH 24" PLATFORM)



7WP2424RA3B4
(WITH 24" PLATFORM)



3WP2424A3
(WITH 24" PLATFORM)

SERIES WP (single access) MODEL NUMBERS & MEASUREMENTS



	NO. OF STEPS	PLATFORM HEIGHT	OVERALL HEIGHT	WORKING HEIGHT (approx.)	STEP WIDTH	BASE WIDTH	24" PLATFORM DEPTH			36" PLATFORM DEPTH			48" PLATFORM DEPTH			60" PLATFORM DEPTH			72" PLATFORM DEPTH		
							MODEL NUMBER	BASE LENGTH	SHP. WT. LBS.	MODEL NUMBER	BASE LENGTH	SHP. WT. LBS.	MODEL NUMBER	BASE LENGTH	SHP. WT. LBS.	MODEL NUMBER	BASE LENGTH	WEIGHT LBS.	MODEL NUMBER	BASE LENGTH	SHP. WT. LBS.
NO HANDRAILS	2 STEP	20"	20"	86"	24"	28"	2WP2424	34"	47	2WP2436	46"	60	2WP2448	58"	77	2WP2460	70"	83	---	---	---
	2 STEP	20"	20"	86"	36"	40"	2WP3624	34"	62	2WP3636	46"	80	2WP3648	58"	104	2WP3660	70"	122	---	---	---
	3 STEP	30"	30"	96"	24"	28"	3WP2424	43"	62	3WP2436	55"	75	3WP2448	66"	94	3WP2460	78"	107	3WP2472	90"	122
	3 STEP	30"	30"	96"	36"	40"	3WP3624	43"	81	3WP3636	55"	79	3WP3648	66"	125	3WP3660	78"	143	3WP3672	90"	163
HANDRAILS	4 STEP	40"	40"	106"	24"	28"	4WP2424	51"	77	4WP2436	63"	89	4WP2448	75"	112	4WP2460	86"	124	4WP2472	98"	140
	4 STEP	40"	40"	106"	36"	40"	4WP3624	51"	100	4WP3636	63"	117	4WP3648	75"	146	4WP3660	86"	164	4WP3672	98"	184
	5 STEP	50"	86"	116"	24"	28"	5WP2424R	58"	106	5WP2436R	70"	121	5WP2448R	82"	152	5WP2460R	94"	165	5WP2472R	106"	178
	5 STEP	50"	86"	116"	36"	40"	5WP3624R	58"	136	5WP3636R	70"	184	5WP3648R	82"	192	5WP3660R	94"	210	5WP3672R	106"	228
HANDRAILS	6 STEP	60"	96"	126"	24"	28"	6WP2424R	67"	123	6WP2436R	78"	136	6WP2448R	90"	170	6WP2460R	102"	184	6WP2472R	114"	198
	6 STEP	60"	96"	126"	36"	40"	6WP3624R	67"	155	6WP3636R	78"	173	6WP3648R	90"	213	6WP3660R	102"	233	6WP3672R	114"	253
	7 STEP	70"	106"	136"	24"	28"	7WP2424R	75"	137	7WP2436R	87"	150	7WP2448R	99"	187	7WP2460R	110"	208	7WP2472R	122"	228
7 STEP	70"	106"	136"	36"	40"	7WP3624R	75"	174	7WP3636R	87"	192	7WP3648R	99"	235	7WP3660R	110"	262	7WP3672R	122"	290	



dual access
WORK PLATFORMS



6DWP3648RA3
(WITH 48" LONG PLATFORM)

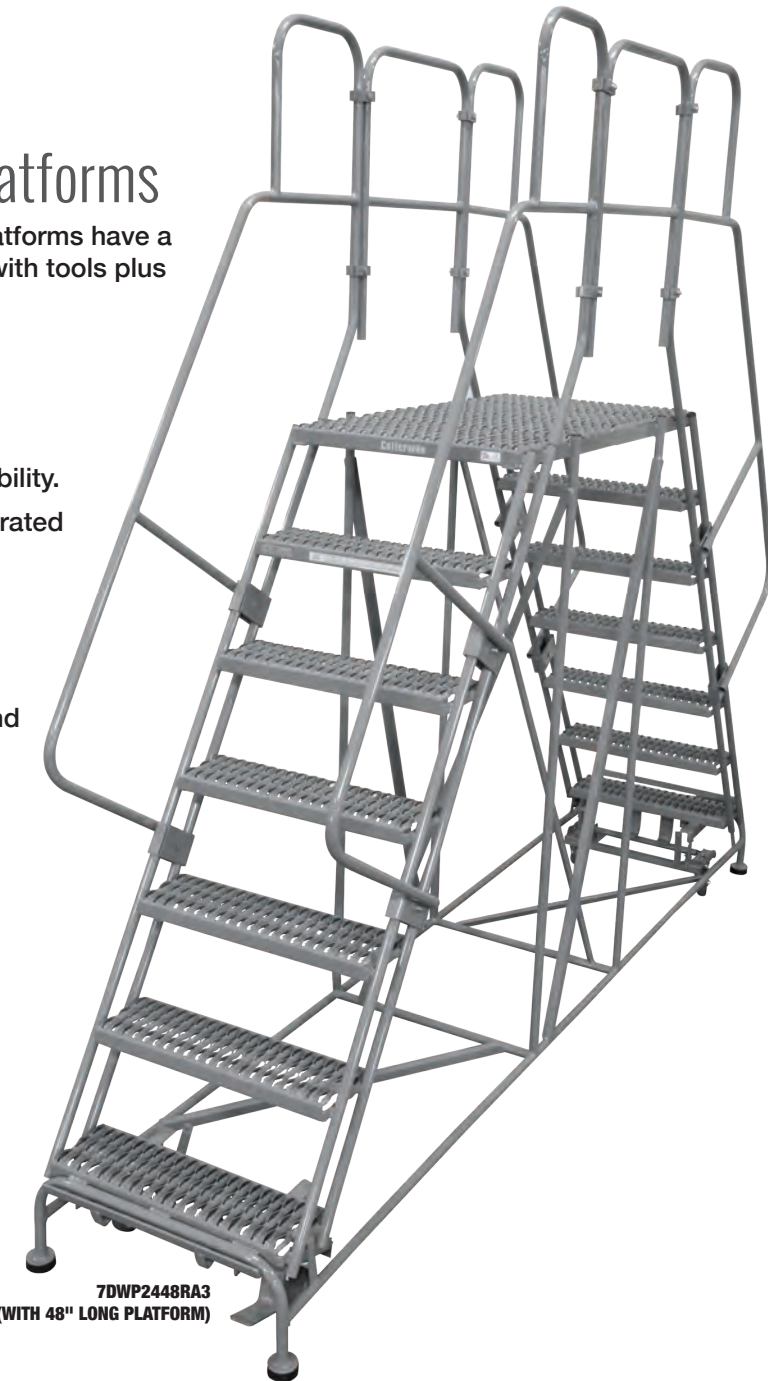
SERIES "DWP"
Heavy Duty, Dual Access Work Platforms

THE COTTERMAN® SERIES DWP Dual Access Work Platforms have a higher load capacity and larger platform for two people with tools plus stairs at each end of the platform.

- 800 lb. load rating.
- 59° climb angle.
- Rests on four 2½" diameter rubber pads.
- Cotterman® SafeLock is provided on both ends for mobility.
- Steps and platforms are constructed of heavy duty serrated tread.
- Gray powder coat finish is standard.
- 36" high handrails with midrail ship knocked-down for field assembly.
- Dual Access Work Platforms meet applicable OSHA and ANSI standards.
- Cal-OSHA models also available.



3DWP2448RA3
(WITH 48" LONG PLATFORM)



7DWP2448RA3
(WITH 48" LONG PLATFORM)

SERIES DWP (dual access) MODEL NUMBERS & MEASUREMENTS



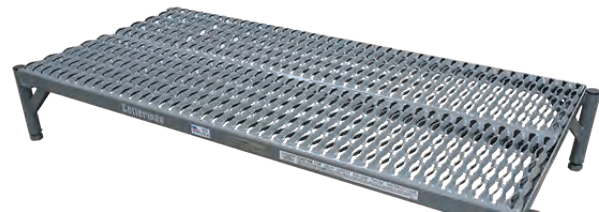
**LOAD RATING
800 LBS.**

NO. OF STEPS	PLATFORM HEIGHT	OVERALL HEIGHT	WORKING HEIGHT (approx.)	STEP WIDTH	48" PLATFORM DEPTH			60" PLATFORM DEPTH			72" PLATFORM DEPTH			84" PLATFORM DEPTH						
					MODEL NUMBER	BASE WIDTH	BASE LENGTH	SHP. WT. LBS.	MODEL NUMBER	BASE WIDTH	BASE LENGTH	SHP. WT. LBS.	MODEL NUMBER	BASE WIDTH	BASE LENGTH	SHP. WT. LBS.	MODEL NUMBER	BASE WIDTH	BASE LENGTH	SHP. WT. LBS.
3 STEP	30"	66"	96"	24"	3DWP2448R	28"	75"	197	3DWP2460R	28"	87"	218	3DWP2472R	28"	99"	232	3DWP2484R	28"	111"	197
3 STEP	30"	66"	96"	36"	3DWP3648R	40"	75"	239	3DWP3648R	40"	87"	267	3DWP3672R	40"	99"	286	3DWP3684R	40"	111"	314
4 STEP	40"	76"	106"	24"	4DWP2448R	28"	87"	217	4DWP2460R	28"	99"	244	4DWP2472R	28"	111"	247	4DWP2484R	28"	123"	279
4 STEP	40"	76"	106"	36"	4DWP3648R	40"	87"	266	4DWP3660R	40"	99"	298	4DWP3672R	40"	111"	316	4DWP3684R	40"	123"	347
5 STEP	50"	86"	116"	24"	5DWP2448R	28"	99"	229	5DWP2460R	28"	111"	266	5DWP2472R	28"	123"	280	5DWP2484R	28"	135"	308
5 STEP	50"	86"	116"	36"	5DWP3648R	40"	99"	297	5DWP3660R	40"	111"	330	5DWP3672R	40"	123"	349	5DWP3684R	40"	135"	383
6 STEP	60"	96"	126"	24"	6DWP2448R	28"	111"	272	6DWP2460R	28"	123"	305	6DWP2472R	28"	135"	318	6DWP2484R	28"	147"	349
6 STEP	60"	96"	126"	36"	6DWP3648R	40"	111"	337	6DWP3660R	40"	123"	376	6DWP3672R	40"	135"	395	6DWP3684R	40"	147"	432
7 STEP	70"	106"	136"	24"	7DWP2448R	28"	123"	298	7DWP2460R	28"	135"	330	7DWP2472R	28"	147"	344	7DWP2484R	28"	159"	377
7 STEP	70"	106"	136"	36"	7DWP3648R	40"	123"	371	7DWP3660R	40"	135"	410	7DWP3672R	40"	147"	429	7DWP3684R	40"	159"	468



adjustable WORK PLATFORMS

Adjusts 5" to 8" or 9" to 14" (1 step), 13" to 21" (2 step) to meet your varying work levels. Adjustable Work Platforms have a higher load capacity and larger platform for two people, plus tools. Available in serrated or solid with ergo-mat tread. Available in Steel, Aluminum or Stainless Steel.



1AWP2424A5-8
(WITH 20" DEEP TOP STEP)



SERIES AWP 1-step

LOAD RATING
800 LBS.

ADJUSTABLE PLATFORM HEIGHT	WORKING HEIGHT (approx.)	MODEL NUMBER	BASE WIDTH	BASE LENGTH	NO. LEGS	SHP. WT. LBS.
5" - 8"	71" - 74"	1AWP2424A5-8	24"	24"	4	25
5" - 8"	71" - 74"	1AWP2436A5-8	24"	36"	4	37
5" - 8"	71" - 74"	1AWP2448A5-8	24"	48"	4	39
5" - 8"	71" - 74"	1AWP2460A5-8	24"	60"	6	51
5" - 8"	71" - 74"	1AWP2472A5-8	24"	72"	6	59
5" - 8"	71" - 74"	1AWP2496A5-8	24"	96"	6	74
9" - 14"	75" - 80"	1AWP2424A9-14	24"	24"	4	29
9" - 14"	75" - 80"	1AWP2436A9-14	24"	36"	4	36
9" - 14"	75" - 80"	1AWP2448A9-14	24"	48"	4	43
9" - 14"	75" - 80"	1AWP2460A9-14	24"	60"	6	58
9" - 14"	75" - 80"	1AWP2472A9-14	24"	72"	6	66
9" - 14"	75" - 80"	1AWP2496A9-14	24"	96"	6	81

AVAILABLE WITH RUBBER TIPPED LEGS (B1)
OR 2½" RUBBER PADS (B8).

SERIES AWP 2-step

LOAD RATING
800 LBS.

ADJUSTABLE PLATFORM HEIGHT	WORKING HEIGHT (approx.)	MODEL NUMBER	BASE WIDTH	BASE LENGTH	NO. LEGS	WEIGHT LBS.
13" - 21"	79" - 87"	2AWP2412A13-21	26"	23"	4	60
13" - 21"	79" - 87"	2AWP3612A13-21	38"	23"	4	77

EXCLUSIVE ADJUSTING MECHANISM KEEPS THE STEP RISE EQUAL WHEN PLATFORM HEIGHT IS ADJUSTED.

FIRST THING'S FIRST

"HOW TO SELECT THE CORRECT LADDER!"

1 LADDER DIMENSIONS



Working height is the approximate height that you would like to be able to comfortably reach. It is usually calculated at 5.5' above the ladder's platform height.

Overall height is VERY important. You want to be sure that your ladder will not be too tall to fit into your workspace. This includes being able to fit through any doors that you may need to move it through, or under any ceilings or fixtures that you may have.

Top Step height is the measurement of the top step from the ground. It's important that this measurement is not too far above or below your desired working height.

Base width is also very important because as ladders get taller, the base width increases. It is important to be sure that the ladder will not be too wide for your workspace.

Base length is the measurement of how long the base of the ladder runs. This is dependent upon the height of the ladder. The taller the ladder, the longer the base.

2 HANDRAIL OPTIONS



COLOR OPTIONS

Cotterman® offers a variety of powder-coated colors to suit your needs. Choose from any of the following 11 colors.





MASTER STEP®
&
ALUMA STEP®

OFFICE LADDERS



ST-502
LEFT HANDRAIL

steel or aluminum
OFFICE LADDERS

Choose the Color...
Choose the Handrail Configuration.

COTTERMAN® OFFICE LADDERS were first introduced to compliment business interiors, but have since expanded for use in retail, warehousing and even manufacturing applications. The tapered step design, retractable casters and large protective cupped feet increase stability.

Steel Office Ladders (Master Step®) load rating is 450 lbs. Aluminum models (Aluma-Step®) have a 300 lbs. load rating. Aluminum alloy construction is available for those applications that require cleanliness, corrosion resistance or non-magnetic use.

One through six step sizes are available with single or double top steps. Left, right or double handrail arrangements and a removable filing shelf are offered for added convenience. Office Ladders are equipped with easy rolling 2" spring casters for quick start and stop mobility. Comfortable climbing steps and platform are covered with ribbed vinyl matting as standard.

Office ladders meet applicable OSHA and ANSI standards.

- 56° climb angle.
- Tray (F2-Steel, F4-Aluminum) or Flat Shelf (F3-Steel, F5-Aluminum) available on 3 to 6 step models.



OFFICE LADDERS MODEL NUMBERS & MEASUREMENTS

LOAD RATING - STEEL
450 LBS.

LOAD RATING - ALUMINUM
300 LBS.

NO. OF STEPS	TOP STEP HEIGHT	WORKING HEIGHT (approx.)	NO HANDRAILS				DOUBLE HANDRAILS				LEFT HANDRAIL				RIGHT HANDRAIL								
			MODEL NUMBER	BASE WIDTH	BASE LENGTH	OVERALL HEIGHT	SHP. WT. LBS.	MODEL NUMBER	BASE WIDTH	BASE LENGTH	OVERALL HEIGHT	SHP. WT. LBS.	MODEL NUMBER	BASE WIDTH	BASE LENGTH	OVERALL HEIGHT	SHP. WT. LBS.	MODEL NUMBER	BASE WIDTH	BASE LENGTH	OVERALL HEIGHT	SHP. WT. LBS.	
STEEL																							
SINGLE TOP STEP	2 STEP	18"	84"	ST-200	22"	20"	18"	26	ST-201	22"	20"	48"	39	ST-202	22"	20"	48"	36	ST-203	22"	20"	48"	36
	3 STEP	27"	93"	ST-300	24"	27"	27"	38	ST-301	24"	27"	57"	49	ST-302	24"	27"	57"	46	ST-303	24"	27"	57"	46
	4 STEP	36"	102"	ST-400*	25"	34"	36"	48	ST-401	25"	34"	66"	59	ST-402*	25"	34"	66"	55	ST-403*	25"	34"	66"	55
	5 STEP	45"	111"	ST-500*	26"	40"	45"	65	ST-501	26"	40"	75"	77	ST-502*	26"	40"	75"	70	ST-503*	26"	40"	75"	70
	6 STEP	54"	120"	-	-	-	-	-	ST-601**	27"	48"	84"	88	-	-	-	-	-	-	-	-	-	-
	DOUBLE TOP STEP	1 STEP	9"	65"	ST-120	22"	19"	9"	20	-	-	-	-	-	-	-	-	-	-	-	-	-	-
DOUBLE TOP STEP	2 STEP	18"	84"	ST-220	22"	26"	18"	32	ST-221	22"	26"	48"	45	ST-222	22"	26"	48"	42	ST-223	22"	26"	48"	42
	3 STEP	27"	93"	ST-320	24"	32"	27"	43	ST-321	24"	32"	57"	54	ST-322	24"	32"	57"	51	ST-323	24"	32"	57"	51
	4 STEP	36"	102"	ST-420*	25"	39"	36"	52	ST-421	25"	39"	66"	64	ST-422*	25"	39"	66"	60	ST-423*	25"	39"	66"	60
	5 STEP	45"	111"	ST-520*	26"	46"	45"	68	ST-521	26"	46"	75"	81	ST-522*	26"	46"	75"	77	ST-523*	26"	46"	75"	77
	6 STEP	54"	120"	-	-	-	-	-	ST-621**	27"	53"	84"	93	-	-	-	-	-	-	-	-	-	-
	ALUMINUM																						
SINGLE TOP STEP	2 STEP	18"	84"	AM-200	22"	20"	18"	16	AM-201	22"	20"	48"	23	AM-202	22"	20"	48"	22	AM-203	22"	20"	48"	22
	3 STEP	27"	93"	AM-300	24"	27"	27"	23	AM-301	24"	27"	57"	28	AM-302	24"	27"	57"	27	AM-303	24"	27"	57"	27
	4 STEP	36"	102"	AM-400*	25"	34"	36"	29	AM-401	25"	34"	66"	33	AM-402*	25"	34"	66"	32	AM-403*	25"	34"	66"	32
	5 STEP	45"	111"	AM-500*	26"	40"	45"	40	AM-501	26"	40"	75"	45	AM-502*	26"	40"	75"	44	AM-503*	26"	40"	75"	44
	6 STEP	54"	120"	-	-	-	-	-	AM601**	27"	48"	84"	51	-	-	-	-	-	-	-	-	-	-
	DOUBLE TOP STEP	1 STEP	9"	65"	AM-120	22"	19"	9"	13	-	-	-	-	-	-	-	-	-	-	-	-	-	-
DOUBLE TOP STEP	2 STEP	18"	84"	AM-220	22"	26"	18"	20	AM-221	22"	26"	48"	28	AM-222	22"	26"	48"	26	AM-223	22"	26"	48"	26
	3 STEP	27"	93"	AM-320	24"	32"	27"	26	AM-321	24"	32"	57"	31	AM-322	24"	32"	57"	29	AM-323	24"	32"	57"	29
	4 STEP	36"	102"	AM-420*	25"	39"	36"	31	AM-421	25"	39"	66"	36	AM-422*	25"	39"	66"	34	AM-423*	25"	39"	66"	34
	5 STEP	45"	111"	AM-520*	26"	46"	45"	42	AM-521	26"	46"	75"	48	AM-522*	26"	46"	75"	46	AM-523*	26"	46"	75"	46
	6 STEP	54"	120"	-	-	-	-	-	AM-621**	27"	53"	84"	53	-	-	-	-	-	-	-	-	-	-

*Must have double handrails for CAL-OSHA.
**Must have 42" guardrails for CAL-OSHA.

R2C
 READY TO CLIMB
 zero assembly time.

STEP STANDS & STOOLS

steel or aluminum Step Stands & Stools

Convenient and heavy duty, **STEP STANDS** are equipped with non-slip serrated steps. Rubber tipped legs to hold the stand secure during use. A comfortable easy climbing angle of 45 degrees. Steel stands have a gray powder-coat finish and lightweight aluminum stands have a mill finish. Choose from one, two and three step models.

- 500 lb. load rating.
- 45° climb angle.
- Serrated steps.
- 10" deep steps. (1801N 12")
- Without handrails.
- Step Stands & Stools meet applicable OSHA and ANSI standards.



**LOAD RATING
 500 LBS.**

Step Stands & Stools MODEL NUMBERS & MEASUREMENTS

DESCRIPTION	TREAD	TOP STEP HEIGHT	OVERALL HEIGHT	WORKING HEIGHT (approx.)	MODEL NUMBER	BASE WIDTH	BASE LENGTH	TREAD WIDTH	SHP. WT. LBS.
STEEL									
2 STEP	SERRATED	20"	20"	86"	1302N2626A3E10B1C1	27"	23"	24"	24
2 STEP W/CASTERS	SERRATED	20"	20"	86"	1302N2626A3E10B3C1	27"	23"	24"	28
3 STEP	SERRATED	30"	30"	96"	1403N2628A3E10B1C1*	28"	34"	24"	42
3 STEP	SERRATED	30"	30"	96"	1403N3234A3E10B1C1*	34"	34"	30"	47
ALUMINUM									
1 STEP	SERRATED	10"	10"	76"	1801N3232A3E12B1C50	33"	17"	30"	9
2 STEP	SERRATED	20"	20"	86"	1802N2626A3E10B1C50	27"	23"	24"	13
3 STEP	SERRATED	30"	30"	96"	1903N2628A3E10B1C50*	28"	34"	24"	25
3 STEP	SERRATED	30"	30"	96"	1803N3232A3E10B1C50	33"	33"	30"	23

*SHIPS UNASSEMBLED



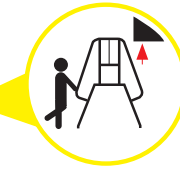
CROSSOVER BRIDGES

FIRST THING'S FIRST "HOW TO SELECT THE CORRECT BRIDGE!"

1 LADDER DIMENSIONS



Standing height is the approximate height that a person would stand while on the bridge. You will want to be sure that the user can stand comfortably on the platform without obstruction. We calculate this at 6 feet. But individual standing height may vary.



Overall height is VERY important. You want to be sure that your bridge will not be too tall to fit into your workspace. This includes being able to fit through any doors that you may need to move it through, or under any ceilings or fixtures that you may have.



Platform height is the measurement of the top step from the ground. It's important that this measurement is not too far above or below your desired working height.

Overall length is the measurement between the floor-mounting brackets. This is dependent upon the height of the bridge. The taller the bridge, the longer the overall length. Lower climb angles also increase overall length.

2 PLATFORM DEPTH



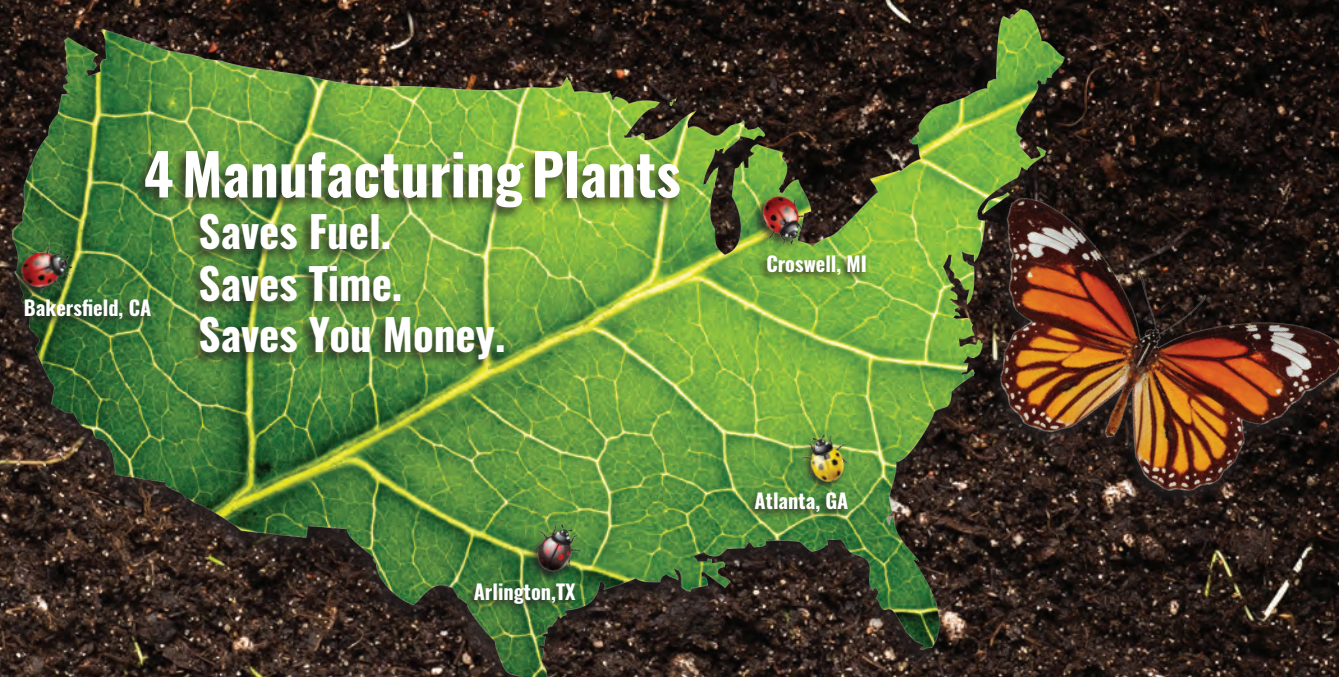
Serrated (A3) Steel & Aluminum Models
Open step serrated surface. For rugged applications.



Diamond Plate (A7)
Trustworthy grip, ideal for dry, indoor environments.

COLOR OPTIONS (steel only)

Cotterman® offers a variety of powder-coated colors to suit your needs. Choose from any of the following 11 colors.



4 Manufacturing Plants
Saves Fuel.
Saves Time.
Saves You Money.

Our Commitment to the Environment starts with our Commitment to **YOU!**

Most Cotterman products ship set up, ready to use.
We can do this because of our four US plants.

Our competitors ship flat packed unassembled ladders - a typical flat packed 10 step ladder can have 30 pounds of packaging materials, composed of plastic, corrugated, and pallet lumber.

We use a one pound recyclable polypropylene bag.

Our multiple manufacturing plants reduces the fuel consumption requirements of our logistic providers.

For example, We estimate that **191,085 lbs. (95.54 US tons)** of carbon were saved by shipping from four manufacturing locations versus just the Croswell, MI location. This equates to an estimated annual savings of **8,514 gallons** of diesel fuel.

In 2016 our company recycling program recycled:

266,400 lbs. of steel, **30,400 lbs.** of cardboard, and **31,800 lbs.** of aluminum.

Cotterman®
cotterman.com



CROSSOVER BRIDGES



4SCS24A3
(STEEL)

steel or aluminum

Crossover Bridges

Easy, convenient access over obstacles

COTTERMAN® CROSSOVER BRIDGES provide safe walkways over a variety of obstacles such as conveyors, machines, and pipes.

- 500 lb. load rating.
- 50° climb angle, with 8" step rise.
- 42" high guardrails.
- Stair sections have 24¹/₈" wide x 7" deep steps. The top platform includes a 4" high toe board on each side.
- Legs have floor mounting plate with 5/8" diameter hole.
- Serrated or Diamond Plate steps.
- Ships unassembled.
- Gray powder coat finish is standard on steel models. Aluminum is a brightened, uniform finish.
- Crossover Bridges meet applicable OSHA and ANSI standards.



6SCA24A3
(WITH 24" PLATFORM)



**LOAD RATING
500 LBS.**

crossover bridges MODEL NUMBERS & MEASUREMENTS

NO. OF STEPS	PLATFORM HEIGHT	OVERALL HEIGHT	STANDING HEIGHT (approx.)	STEP WIDTH	BASE WIDTH	24" PLATFORM DEPTH				36" PLATFORM DEPTH					
						MODEL NUMBER	OVERALL LENGTH	CLEAR HT.	CLEAR WIDTH	SHP. WT. LBS.	MODEL NUMBER	OVERALL LENGTH	CLEAR HT.	CLEAR WIDTH	SHP. WT. LBS.
STEEL															
4 STEP	32"	74"	104"	24"	28 ⁵ / ₈ "	4SCS24A3	86"	30"	24 ⁷ / ₈ "	328	4SCS36A3	98"	30"	36 ⁵ / ₈ "	359
5 STEP	40"	82"	112"	24"	28 ⁵ / ₈ "	5SCS24A3	99"	38"	24 ⁷ / ₈ "	371	5SCS36A3	111"	38"	36 ⁵ / ₈ "	401
6 STEP	48"	90"	120"	24"	28 ⁵ / ₈ "	6SCS24A3	113"	46"	24 ⁷ / ₈ "	413	6SCS36A3	125"	46"	36 ⁵ / ₈ "	444
7 STEP	56"	98"	128"	24"	28 ⁵ / ₈ "	7SCS24A3	126"	54"	24 ⁷ / ₈ "	456	7SCS36A3	138"	54"	36 ⁵ / ₈ "	486
ALUMINUM															
4 STEP	32"	74"	104"	24"	28 ⁵ / ₈ "	4SCA24A3	86"	30"	24 ⁷ / ₈ "	158	4SCA36A3	98"	30"	36 ⁵ / ₈ "	170
5 STEP	40"	82"	112"	24"	28 ⁵ / ₈ "	5SCA24A3	99"	38"	24 ⁷ / ₈ "	175	5SCA36A3	111"	38"	36 ⁵ / ₈ "	188
6 STEP	48"	90"	120"	24"	28 ⁵ / ₈ "	6SCA24A3	113"	46"	24 ⁷ / ₈ "	193	6SCA36A3	125"	46"	36 ⁵ / ₈ "	205
7 STEP	56"	98"	128"	24"	28 ⁵ / ₈ "	7SCA24A3	126"	54"	24 ⁷ / ₈ "	210	7SCA36A3	138"	54"	36 ⁵ / ₈ "	222

NUMBER OF STEPS IS THE NUMBER OF STEPS ON EACH SIDE, INCLUDING PLATFORM.



SPACE SAVER Crossover Bridges

COTTERMAN® SPACE-SAVER CROSSOVER BRIDGES provide safe access over obstacles in areas with limited space due to a steeper climb angle.

- 500 lb. load rating.
- 70° climb angle, with 8" step rise.
- 42" Handrails, constructed of 1½" diameter round tube.
- Stair sections have 24⅛" wide x 4⅞" deep steps. The top platform includes a 4" high toe board on each side.
- Legs have floor mounting plate with 5/8" diameter hole.
- Serrated or Diamond Plate steps.
- Ships unassembled.
- Gray powder coat finish is standard on steel models. Aluminum is a brightened, uniform finish.
- Cal-OSHA requires customers to request a variance for specific application.

NOTE: Before erecting Space Saver Crossover Bridge, check federal, state and local codes.

Space-Saver Crossover Bridges MODEL NUMBERS & MEASUREMENTS

LOAD RATING 500 LBS.

NO. OF STEPS	PLATFORM HEIGHT	OVERALL HEIGHT	STANDING HEIGHT (approx.)	STEP WIDTH	BASE WIDTH	24" PLATFORM DEPTH				36" PLATFORM DEPTH					
						MODEL NUMBER	OVERALL LENGTH	CLEAR HT.	CLEAR LGTH.	WEIGHT LBS.	MODEL NUMBER	OVERALL LENGTH	CLEAR HT.	CLEAR LGTH.	WEIGHT LBS.
STEEL															
4 STEP	32"	74"	104"	24"	28½"	4SPS24A3	55"	30"	25½"	245	4SPA36A3	67"	30"	37½"	276
5 STEP	40"	82"	112"	24"	28½"	5SPS24A3	61"	38"	25½"	273	5SPA36A3	73"	38"	37½"	303
6 STEP	48"	90"	120"	24"	28½"	6SPS24A3	67"	46"	25½"	300	6SPA36A3	78"	46"	37½"	330
7 STEP	56"	98"	128"	24"	28½"	7SPS24A3	73"	54"	25½"	327	7SPA36A3	84"	54"	37½"	358
ALUMINUM															
4 STEP	32"	74"	104"	24"	28½"	4SPA24A3	55"	30"	25½"	123	4SPA36A3	67"	30"	37½"	135
5 STEP	40"	82"	112"	24"	28½"	5SPA24A3	61"	38"	25½"	133	5SPA36A3	73"	38"	37½"	145
6 STEP	48"	90"	120"	24"	28½"	6SPA24A3	67"	46"	25½"	143	6SPA36A3	78"	46"	37½"	155
7 STEP	56"	98"	128"	24"	28½"	7SPA24A3	73"	54"	25½"	153	7SPA36A3	84"	54"	37½"	165



SERIES 4000 Supported Cantilever Ladders

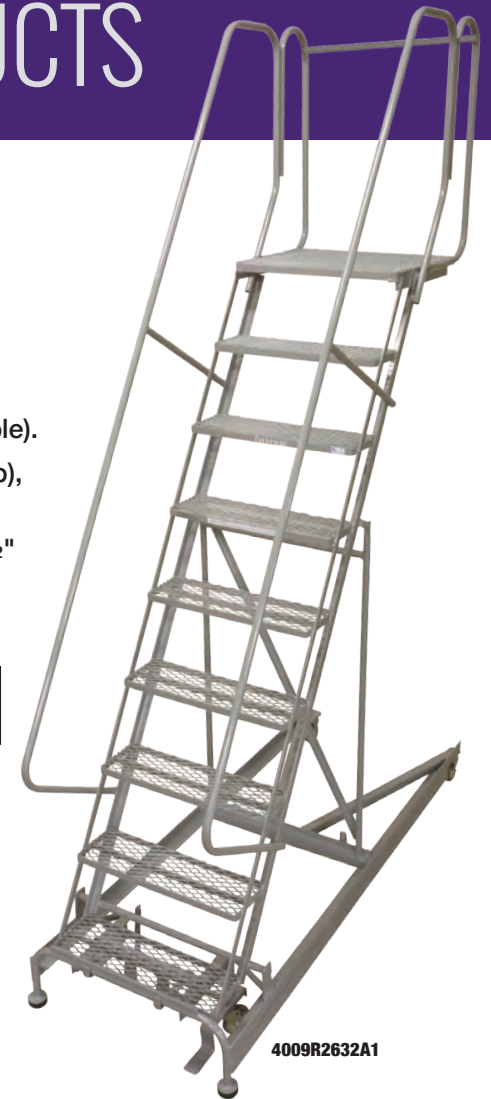
- Framework is 1" O.D. steel tubing. Base is 2"x2"x¼" steel angle. Can be folded for shipping or storing.
- Steps are 24"Wx7"D. Top step is 24"Wx10"D (20" Deep Top Step available).
- Horizontal distance from rear of base to vertical support is 32" (8-12 step), 20" (6 step), and 14" (5 step).
- 4" rigid casters on rear, 4" swivel casters with SafeLock on front, and 2½" diameter rubber pads on legs.
- Series 4000 ladders meet applicable OSHA and ANSI standards.

SERIES 4000 MODEL NUMBERS & MEASUREMENTS

LOAD RATING 300 LBS.



DESCRIPTION	TOP STEP HEIGHT	OVERALL HEIGHT	WORKING HEIGHT (approx.)	24" TREAD WIDTH			
				MODEL NUMBER	BASE WIDTH	BASE LENGTH	WEIGHT LBS.
5 STEP	50"	80"	116"	4005R2632	32"	41"	151
6 STEP	60"	90"	126"	4006R2632	32"	47"	174
7 STEP	70"	100"	136"	4007R2632	32"	53"	192
8 STEP	80"	110"	146"	4008R2632	32"	59"	212
9 STEP	90"	120"	156"	4009R2632	32"	66"	230
10 STEP	100"	130"	166"	4010R2632	32"	73"	253
11 STEP	110"	140"	176"	4011R2632	32"	79"	272
12 STEP	120"	162"	186"	4012R2632	32"	85"	393



4009R2632A1



5006R2630A6

series 5000 Stock and Order Picking Ladders

COTTERMAN® SERIES 5000 all-welded steel stock-picking safety ladders offer the advantages of a rugged one-piece welded ladder with the versatility of a stock-picking truck.

- Available in 6 different heights, each ladder has two (6-7 step) or three (8-11 step) 24"x 24" heavy gauge steel shelves, plus a 24"Wx20"D top step with 10" folding platform workshelf.
- 500 lb. combined load rating (300 lbs. for ladder) & (200 lbs. for shelving).
- Series 5000 ladders meet applicable OSHA and ANSI standards.
- Cal-OSHA models also available.

SERIES 5000 MODEL NUMBERS & MEASUREMENTS



DESCRIPTION	TOP STEP HEIGHT	OVERALL HEIGHT	WORKING HEIGHT (approx.)	24" TREAD WIDTH			
				MODEL NUMBER	BASE WIDTH	BASE LENGTH	WEIGHT LBS.
6 STEP	60"	90"	126"	5006R2630	30"	56"	195
7 STEP	70"	100"	136"	5007R2630	30"	63"	226
8 STEP	80"	110"	146"	5008R2632	32"	68"	231
9 STEP	90"	120"	156"	5009R2632	32"	75"	247
10 STEP	100"	130"	166"	5010R2632	32"	83"	259
11 STEP	110"	140"	176"	5011R2632	32"	88"	281

LOAD RATING 500 LBS.
300 LBS. LADDER
200 LBS. SHELVING



SERIES 3000 Access Ladders - Twin Step

Access from both sides makes these welded steel ladders ideal for narrow aisle use.

- 300 lb. load rating.
- Steps are 7" deep and the platform is 20" deep.
- Spring-loaded 2" swivel casters.
- Gray powder coat finish is standard.
- Series 3000 ladders meet applicable OSHA and ANSI standards.
- CAL-OSHA models available.



**LOAD RATING
300 LBS.**

SERIES 3000 MODEL NUMBERS & MEASUREMENTS

DESCRIPTION	TOP STEP HEIGHT	OVERALL HEIGHT	WORKING HEIGHT (approx.)	18" WIDE AT TOP			26" WIDE AT TOP				
				MODEL NUMBER	BASE WIDTH	BASE LENGTH	WEIGHT LBS.	MODEL NUMBER	BASE WIDTH	BASE LENGTH	WEIGHT LBS.
2 STEP WITH GUIDE RAILS	20"	20"	86"	3002N1818	18"	31"	44	3002N2626	26"	56"	54
3 STEP WITH GUIDE RAILS	30"	30"	96"	3003N1820	20"	43"	63	3002N2630	30"	62"	76
3 STEP WITH HANDRAILS	30"	60"	96"	3003R1820	20"	43"	72	3003R2630	30"	68"	84
4 STEP WITH GUIDE RAILS	40"	40"	106"	3004N1823	23"	55"	83	3004N2630	30"	74"	98
4 STEP WITH HANDRAILS	40"	70"	106"	3004R1823	23"	55"	90	3004R2630	30"	80"	106
5 STEP WITH HANDRAILS	50"	80"	116"	3005R1823	23"	67"	107	3005R2630	30"	86"	127



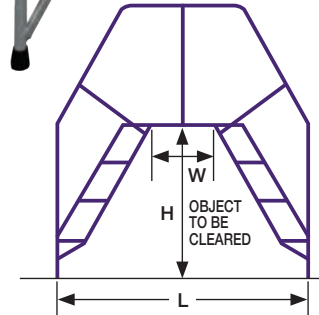
SERIES "PC" Portable Crossover Ladders

Portable steel crossovers are easily moved from place to place.

- 350 lb. load rating.
- 50° climb angle.
- 1" diameter steel tubing with 24" wide treads.
- Rugged one-piece welded-steel construction.
- Rubber tips on all four legs.
- Series PC ladders meet applicable OSHA and ANSI standards.



6PC36A3
(WITH 36" PLATFORM)



SERIES PC MODEL NUMBERS & MEASUREMENTS

NO. STEPS INCLUDING PLATFORM	TOP STEP HEIGHT	OVERALL HEIGHT	WORKING HEIGHT (approx.)	24" TREAD WIDTH					
				MODEL NUMBER	BASE WIDTH	BASE LENGTH (L)	CLEAR HEIGHT (H)	CLEAR WIDTH (W)	WEIGHT LBS.
3 STEP / 24" PLATFORM	30"	60"	96"	3PC24	30"	58"	28"	10"	111
3 STEP / 36" PLATFORM	30"	60"	96"	3PC36	30"	69"	28"	22"	123
3 STEP / 48" PLATFORM	30"	60"	96"	3PC48	30"	82"	28"	32"	156
4 STEP / 24" PLATFORM	40"	70"	106"	4PC24	30"	76"	38"	10"	157
4 STEP / 36" PLATFORM	40"	70"	106"	4PC36	30"	87"	38"	22"	170
4 STEP / 48" PLATFORM	40"	70"	106"	4PC48	30"	100"	38"	32"	207
5 STEP / 24" PLATFORM	50"	80"	116"	5PC24	30"	93"	48"	10"	172
5 STEP / 36" PLATFORM	50"	80"	116"	5PC36	30"	104"	48"	22"	210
5 STEP / 48" PLATFORM	50"	80"	116"	5PC48	30"	116"	48"	32"	240
5 STEP / 60" PLATFORM	50"	80"	116"	5PC60	30"	128"	48"	46"	273
6 STEP / 24" PLATFORM	60"	90"	126"	6PC24	30"	110"	58"	10"	225
6 STEP / 36" PLATFORM	60"	90"	126"	6PC36	30"	121"	58"	22"	237
6 STEP / 48" PLATFORM	60"	90"	126"	6PC48	30"	134"	58"	32"	274
6 STEP / 60" PLATFORM	60"	90"	126"	6PC60	30"	146"	58"	46"	307



GENUINE

Cotterman®

REPLACEMENT PARTS

ADJUSTABLE
SELF-CLOSING
SAFETY GATE

Cottermanstore.com

FOLD UP STEP

- 350-lb. load rating.
- Gray Powder-coated finish.

Mount easily and allow a quick step up. Easily fold into a vertical position when not in use. Includes two 9/16" mounting holes. Fasteners not included.



Fold Up Step

MODEL NUMBERS & MEASUREMENTS

**LOAD RATING
350 LBS.**



DESCRIPTION	MATERIAL	MODEL NO.
MANUAL FOLD-UP STEP, 15" L, 4" H	STEEL	FUS-100
SPRING-LOADED FOLD-UP STEP, 15" L, 4" H	STEEL	FUS-101



R2C
READY TO CLIMB
zero assembly time.

Welded Steel DOCK LADDERS

One-piece welded assemblies that provide safe access to docks and mezzanines. Walk-thru models have 42" high handrails. Side step models have step rungs plus 4 additional hand rungs.

- Constructed of 1 1/4" tube with 3/4" non-slip solid round rungs.
- 18" wide steps on side step models and 24" on walk-thru models, spaced on 12" centers.
- Walk-thru models have flat supports for easy mounting.
- Gray powder coat is standard finish.
- Meet applicable OSHA and ANSI standards.

Walk-Thru Dock Ladders

MODEL NUMBERS & MEASUREMENTS

MODEL NUMBER	NO. STEP RUNGS	DIM. A	WEIGHT LBS.	LOAD RATING 300 LBS.
D2WT	2	1'6"	34	
D3WT	3	2'6"	39	
D4WT	4	3'6"	45	
D5WT	5	4'6"	50	
D6WT	6	5'6"	55	
D7WT	7	6'6"	61	
D8WT	8	7'6"	66	
D9WT	9	8'6"	71	
D10WT	10	9'6"	77	

Side-Step Dock Ladders

MODEL NUMBERS & MEASUREMENTS

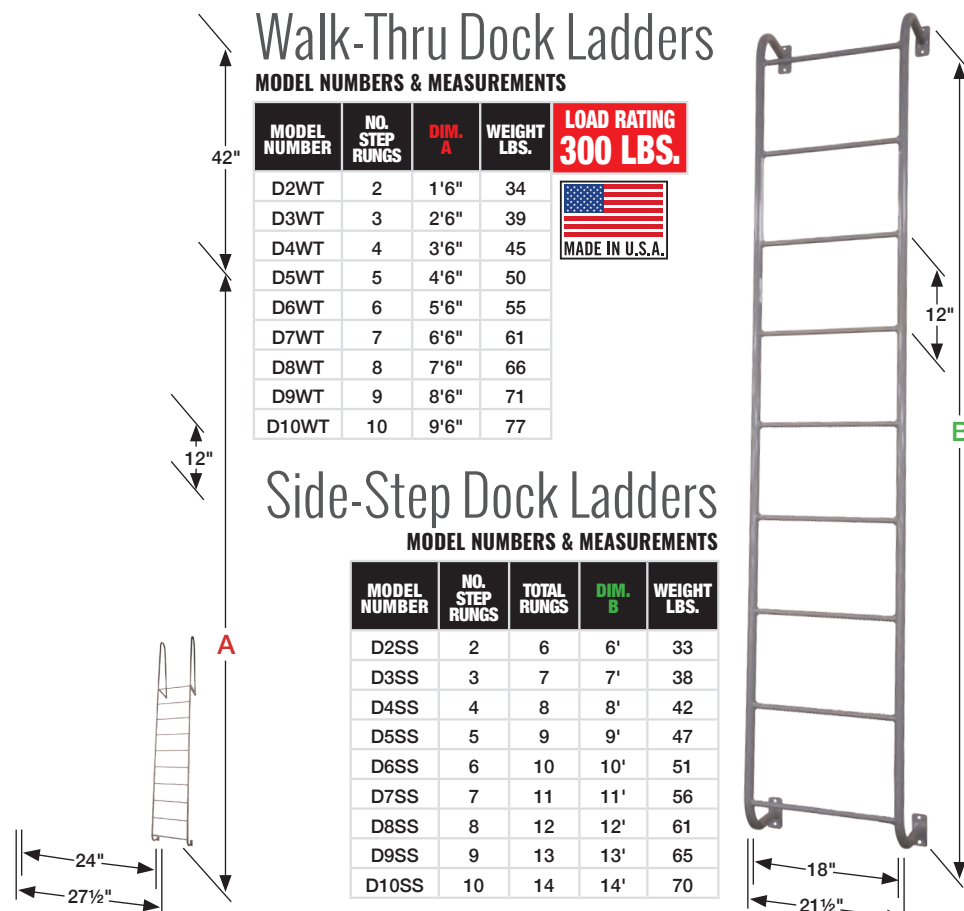
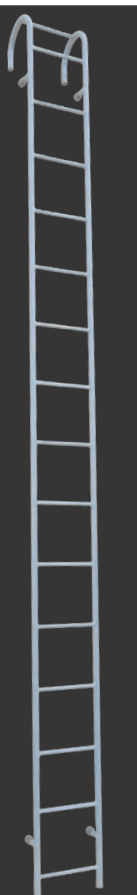
MODEL NUMBER	NO. STEP RUNGS	TOTAL RUNGS	DIM. B	WEIGHT LBS.
D2SS	2	6	6'	33
D3SS	3	7	7'	38
D4SS	4	8	8'	42
D5SS	5	9	9'	47
D6SS	6	10	10'	51
D7SS	7	11	11'	56
D8SS	8	12	12'	61
D9SS	9	13	13'	65
D10SS	10	14	14'	70

Storage Tank Access Ladders

Ladder tops hook to the top edge of a tank to allow user portable access to the inside of storage tanks and vessels. They are constructed of welded steel with durable gray powder-coat paint finish and rubber-tipped legs.

- 300-lb. load rating

MODEL NUMBER	NO. STEP RUNGS	LENGTH	WIDTH	SHP. WT. LBS.
STO6AL	6	73	16"	29
STO7AL	7	85	16"	33
STO8AL	8	97	16"	37
STO9AL	9	109	16"	40
STO10AL	10	121	16"	45
STO11AL	11	133	16"	49
STO12AL	12	145	16"	53
STO13AL	13	157	16"	57
STO14AL	14	169	16"	61
STO15AL	15	181	16"	65



WORKMASTER™

Overhead Work Platforms for forklift trucks

Boost the efficiency and versatility of your forklift trucks with the Overhead Work Platforms from Cotterman®. Quick access to overhead maintenance jobs, construction and repairs, stock selection or just simple light bulb replacement.

- 66" H back guard.
- 42" railing ht.
- Complies with ANSI Standard B56.1-1988: Specifications for Platforms Used to Elevate Personnel.
- 3/4"x7 1/2" tine sleeve.
- 4" toeboard.
- 1 1/4" steel tube railing.

Workmaster™ MODEL NUMBERS & MEASUREMENTS

MODEL NO.	PLATFORM SIZE	TINE SLEEVE SPACING	WEIGHT LBS.	LOAD RATING 1000 LBS.
WM-100	36"Wx48"D	26" c/c	204	
WM-101	48"Wx36"D	30" c/c	194	
WM-103	36"Wx36"D	26" c/c	173	
WM-104	48"Wx48"D	30" c/c	309	

WORKMASTER™ options

HORIZONTAL TUBE CADDY
Option HT: This horizontal caddy slides onto the side rails of the platform and stores 4' and 8' fluorescent tubes. Dual level tray keeps old and new tubes separated.

VERTICAL TUBE CADDY
Option VT: Attaches to the side of the platform and holds a box of 4' or 8' fluorescent tubes. Conserves valuable platform space for tool or supply storage.

OVERHEAD GUARD
Option OG: Attachable overhead guard can be used to help protect workers from falling objects. The overall height of the guard is 80" from the platform deck to the top of the guard.

OPTIONAL CASTERS
Option SC: These easy roll 4" casters bolt directly to the bottom of tine sleeves.

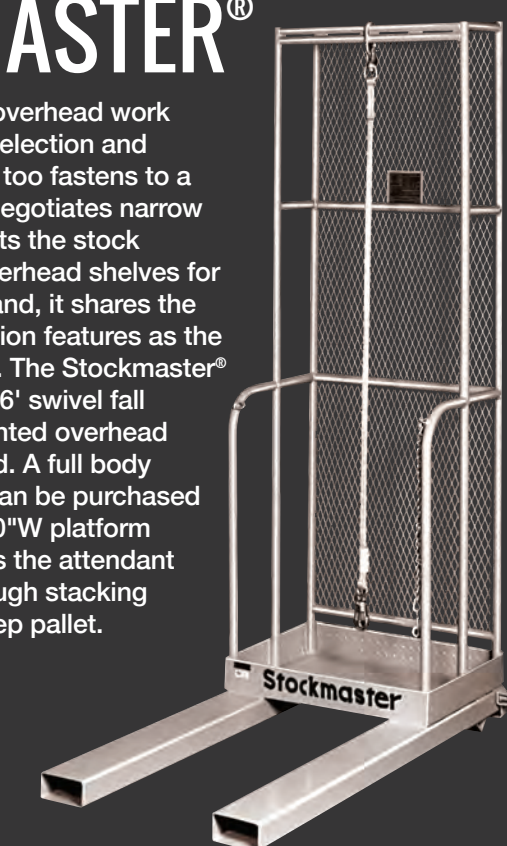
SLIDING TOOL TRAY
Option TT: This handy workshelf secures to the side rails of the platform. It keeps tools within reach without restricting platform space.



STOCKMASTER®

This companion to the overhead work platform will aid in the selection and inventorying of stock. It too fastens to a standard lift truck and negotiates narrow aisles. Stockmaster® gets the stock handler and pallet to overhead shelves for loading and unloading and, it shares the same durable construction features as the standard work platform. The Stockmaster® is now equipped with a 6' swivel fall protection lanyard mounted overhead to an 84" tall back guard. A full body harness for personnel can be purchased separately. The 20"Dx30"W platform with a 4" toeboard gives the attendant room to stand with enough stacking space to handle 42" deep pallet.

- 84"H back guard
- 2 1/2"x5 1/2" tine sleeve
- 42" railing ht.
- 4" toeboard
- 1 1/4" steel tube railing



stockmaster® MODEL NUMBERS & MEASUREMENTS

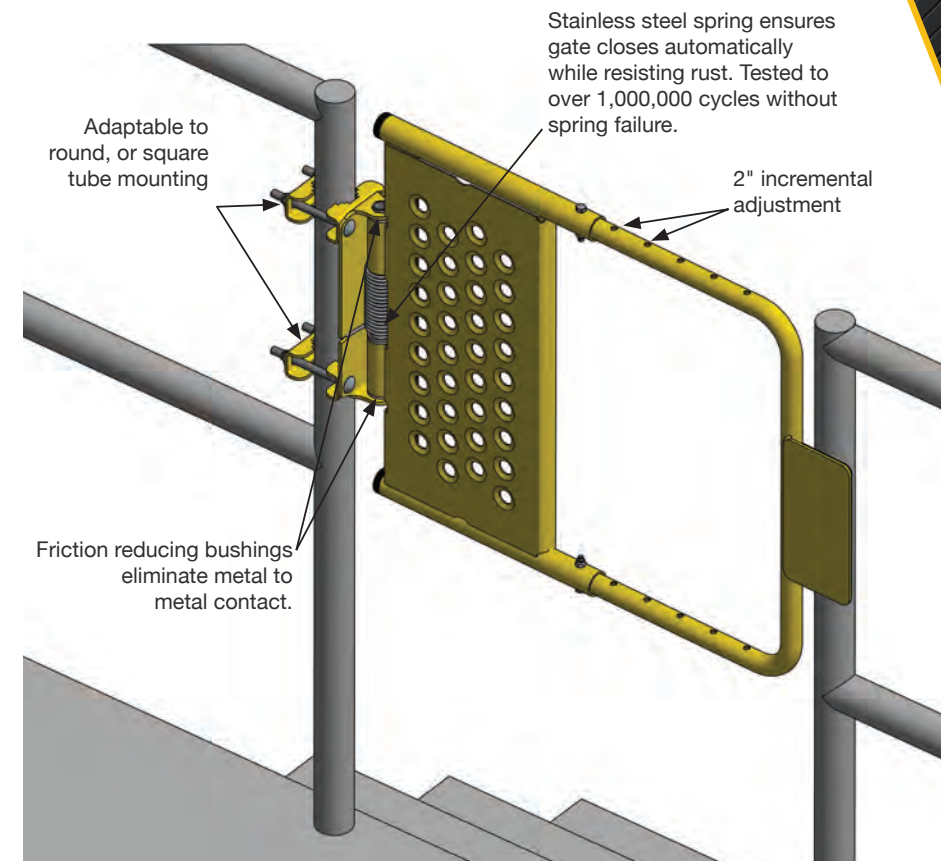
MODEL NO.	PLATFORM SIZE	TINE SLEEVE SPACING	WEIGHT LBS.	LOAD RATING 1000 LBS.
SM-301	30"Wx20"D	42"	223	

adjustable
self-closing
SAFETY GATES

Protects Personnel
from Accidentally Falling
Through Openings



PRODUCT FEATURES



ADJUSTABLE
SELF-CLOSING
SAFETY GATE

ADJUSTABLE

Two sizes cover openings from 16" to 40" openings. Mounts to round or square guardrail systems or to any reinforced flat mounting surface, by simple bolt-on attachment. **Left or Right opening.**

SELF-CLOSING

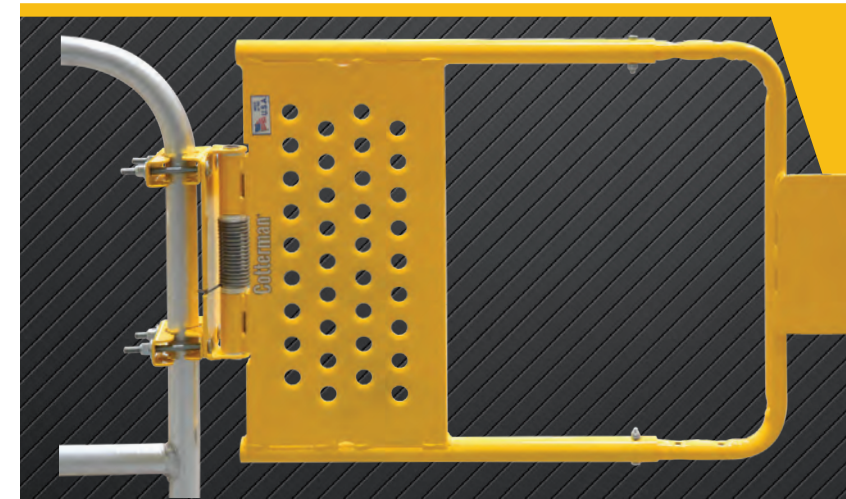
Tested to over 1,000,000 cycles without spring failure.

CORROSION RESISTANT

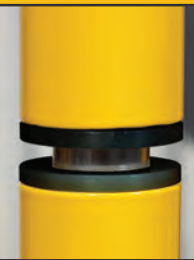
Two-part powder-coat finish, zinc rich primer with UV resistant polyester top coat. Available Galvanized or Stainless Steel models provide corrosion resistance.

OSHA COMPLIANT

Cotterman® Self-Closing Safety Gates meet or exceed the guardrail opening protection requirements of OSHA 1910 Subpart D and ANSI A1264.1-2017.



Tested to over 1,000,000 cycles without spring failure. Stainless Steel spring ensures gate closes automatically while resisting rust.



Friction reducing bushings provide smooth operation and long life, eliminating metal to metal contact.

- Versatile, can be mounted to round rail, square rail of up to 2", or a firm reinforced wall surface.
- Stainless steel spring closes the gate after each pass thru.
- Gate width is available in two adjustable size ranges: to fit openings of 16" to 24" or 24" to 40". Gate width is adjustable in 2" increments.
- Available in safety yellow powder coated finish with zinc rich powder coat primer for corrosion resistance, hot-dip galvanized, or stainless steel construction.

Item No.	Fits Clear Opening	Finish
SG1626ZC2P1S	16" - 26"	Safety yellow powder top coat*
SG2440ZC2P1S	24" - 40"	Safety yellow powder top coat*
SG1626SP1S	16" - 26"	Stainless Steel
SG2440SP1S	24" - 40"	Stainless Steel
SG1626C51P1S	16" - 26"	Galvanized
SG2440C51P1S	24" - 40"	Galvanized

*zinc rich powder-coat primer

Application: Intended for use with OSHA compliant 42" guardrail systems. Cotterman® Adjustable Self Closing Safety Gates meet OSHA 1910 Subpart D, and ANSI-A1264.1.

bolt-on
ALUMINUM RAILINGS



bolt-on
ALUMINUM RAILINGS

- Aluminum one-piece welded construction.
- 1½" diameter tube.
- 42" high with mid-rail.
- Corrosion resistant.
- Non-magnetic.
- Brightened uniform finish.
- Mounting feet have 9/16" diameter holes for bolt-on field installation.
- Mounting hardware not included.
- Available in choices of 7 lengths, 2' through 8'.
- Choose a combination of models for distances greater than 8'.
- Aluminum Railings meet applicable OSHA standards.

BOLT-ON
ALUMINUM RAILINGS

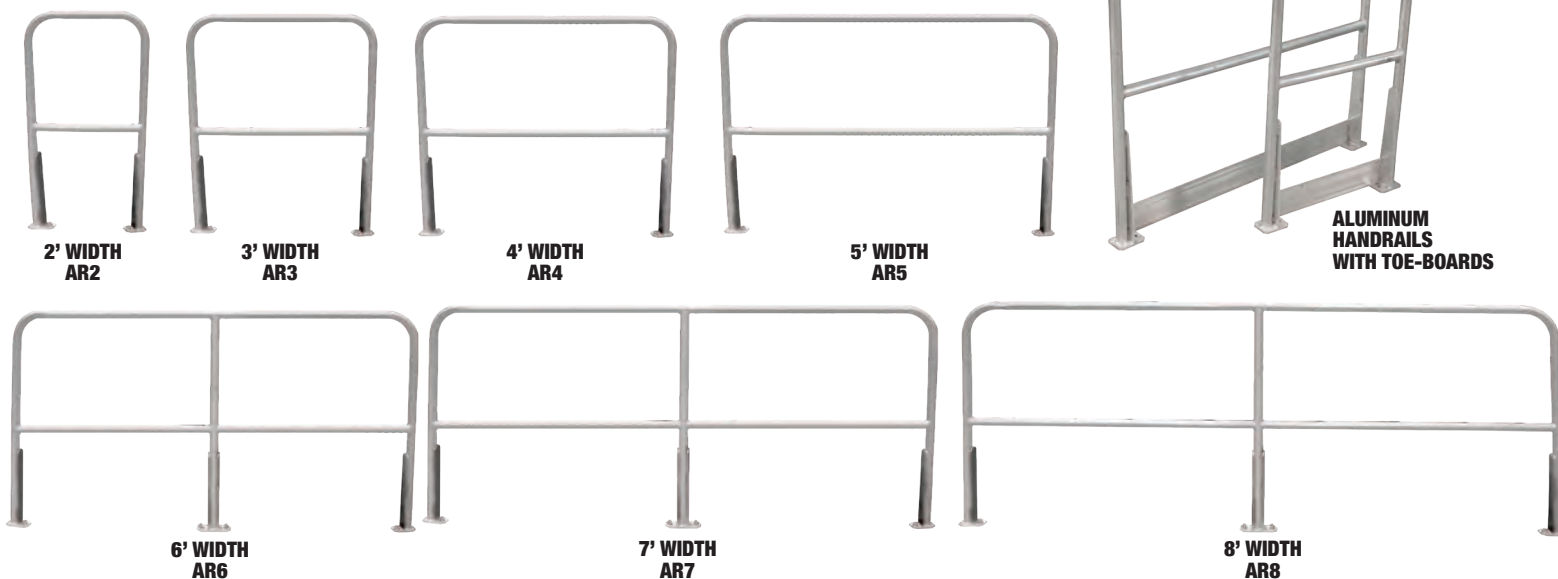
MODEL NUMBERS & MEASUREMENTS

WITHOUT TOE-BOARDS

MODEL NO.	RAILING LENGTH
AR2	2'
AR3	3'
AR4	4'
AR5	5'
AR6	6'
AR7	7'
AR8	8'

WITH TOE-BOARDS

MODEL NO.	RAILING LENGTH
AR2T	2'
AR3T	3'
AR4T	4'
AR5T	5'
AR6T	6'
AR7T	7'
AR8T	8'





FIXED LADDERS



SERIES "F" & SERIES "M"

COTTERMAN® FIXED STEEL LADDERS are designed for use where safe, solid vertical climbing access is required. Series F and Series M modular fixed steel ladders are available with and without walk-thru handrails at the top landing surface. All Cotterman® fixed ladders meet applicable OSHA and ANSI standards.

SERIES F FIXED LADDERS: Ladders are heavy duty welded assemblies

SERIES M MODULAR FIXED LADDERS: Ladders are heavy duty sub-assemblies, no section is greater than 7' in length.

CONSTRUCTION FEATURES:

- Side members are 1/4"x2"x2" steel angle. Climbing rungs are 3/4" corrugated steel round rungs spaced on 12" centers. Stand-off brackets are 7".

FIXED LADDER WITH WALK-THRU HANDRAILS: Ladders are designed for applications where safe landing access is required. They are welded assemblies for use in applications less than 50' in vertical height.

CONSTRUCTION FEATURES:

- Side members are 1/4"x2"x2" steel angle. 3/4" corrugated steel round climbing rungs on 12" centers. Stand-off mounting brackets are 7".
- Walk-thru handrails extend 42" above landing surface. Mounting brackets included.
- Welded.

FIXED LADDERS WITH SAFETY CAGES: Standard fixed steel ladders are combined with safety cage protection. Available in 10' through 49' sizes and ideal for hatch-way or side-step landing access.

CAGE FEATURES:

- Cages have flared bottom opening for easy entry.
- Left or right side step access cage designs are available at no charge.
- Cage begins 7' from bottom of ladder.

FIXED LADDER WITH WALK-THRU HANDRAILS AND SAFETY CAGES: Designed for safe landing access and available from 10' to 49'. Cages and walk-thru handrails extend 42" above landing surface.

CAGE FEATURES:

- Cages have flared bottom opening for easy entry.
- Cage begins 7' from bottom of ladder.

NOTE: Every new fixed ladder installation that extends more than 24 feet above a lower level must be equipped with a personal fall arrest system or a ladder safety system.

Fixed Ladders - series F & series M MODEL NUMBERS & MEASUREMENTS



LENGTH-TOP TO BOTTOM RUNG	NO. RUNGS	STANDARD		WITH CAGE			OVERALL LENGTH	WALK THRU-RAIL			WITH WALK THRU & CAGE			OVERALL LENGTH
		SERIES "F" MODEL NUMBER	SHIPPING WEIGHT LBS.	SERIES "F" MODEL NUMBER	SERIES "M" MODEL NUMBER	SHIPPING WEIGHT LBS.		SERIES "F" MODEL NUMBER	SERIES "M" MODEL NUMBER	SHIPPING WEIGHT LBS.	SERIES "F" MODEL NUMBER	SERIES "M" MODEL NUMBER	SHIPPING WEIGHT LBS.	
3'	4	F4S	35				3'3"	F4W	M4W	61				6'8"
4'	5	F5S	43				4'3"	F5W	M5W	70				7'8"
5'	6	F6S	52				5'3"	F6W	M6W	78				8'8"
6'	7	F7S	60				6'3"	F7W	M7W	87				9'8"
7'	8	F8S	66				7'3"	F8W	M8W	95	F8WC	-	167	10'8"
8'	9	F9S	77				8'3"	F9W	M9W	104	F9WC	-	194	11'8"
9'	10	F10S	88				9'3"	F10W	M10W	115	F10WC	-	211	12'8"
10'	11	F11S	96	F11SC	M11SC	156	10'3"	F11W	M11W	123	F11WC	M11WC	226	13'8"
11'	12	F12S	105	F12SC	M12SC	182	11'3"	F12W	M12W	132	F12WC	M12WC	242	14'8"
12'	13	F13S	113	F13SC	M13SC	197	12'3"	F13W	M13W	140	F13WC	M13WC	268	15'8"
13'	14	F14S	122	F14SC	M14SC	213	13'3"	F14W	M14W	148	F14WC	M14WC	284	16'8"
14'	15	F15S	130	F15SC	M15SC	268	14'3"	F15W	M15W	157	F15WC	M15WC	327	17'8"
15'	16	F16S	139	F16SC	M16SC	282	15'3"	F16W	M16W	165	F16WC	M16WC	353	18'8"
16'	17	F17S	150	F17SC	M17SC	298	16'3"	F17W	M17W	176	F17WC	M17WC	369	19'8"
17'	18	F18S	158	F18SC	M18SC	316	17'3"	F18W	M18W	185	F18WC	M18WC	384	20'8"
18'	19	F19S	167	F19SC	M19SC	342	18'3"	F19W	M19W	193	F19WC	M19WC	401	21'8"
19'	20	F20S	175	F20SC	M20SC	357	19'3"	F20W	M20W	202	F20WC	M20WC	428	22'8"
20'	21	F21S	186	F21SC	M21SC	373	20'3"	F21W	M21W	217	F21WC	M21WC	443	23'8"
21'	22	F22S	199	F22SC	M22SC	388	21'3"	F22W	M22W	225	F22WC	M22WC	458	24'8"
22'	23	F23S	207	F23SC	M23SC	414	22'3"	F23W	M23W	234	F23WC	M23WC	485	25'8"
23'	24	F24S	215	F24SC	M24SC	429	23'3"	F24W	M24W	242	F24WC	M24WC	500	26'8"
24'	25	F25S	224	F25SC	M25SC	444	24'3"	F25W	M25W	250	F25WC	M25WC	515	27'8"
25'	26	F26S	232	F26SC	M26SC	471	25'3"	F26W	M26W	265	F26WC	M26WC	571	28'8"
26'	27	F27S	241	F27SC	M27SC	486	26'3"	F27W	M27W	274	F27WC	M27WC	586	29'8"
27'	28	F28S	249	F28SC	M28SC	501	27'3"	F28W	M28W	282	F28WC	M28WC	601	30'8"
28'	29	F29S	267	F29SC	M29SC	559	28'3"	F29W	M29W	293	F29WC	M29WC	619	31'8"
29'	30	F30S	275	F30SC	M30SC	575	29'3"	F30W	M30W	302	F30WC	M30WC	634	32'8"
30'	31	F31S	284	F31SC	M31SC	590	30'3"	F31W	M31W	310	F31WC	M31WC	661	33'8"
31'	32	F32S	292	F32SC	M32SC	605	31'3"	F32W	M32W	319	F32WC	M32WC	677	34'8"
32'	33	F33S	300	F33SC	M33SC	620	32'3"	F33W	M33W	327	F33WC	M33WC	692	35'8"
33'	34	F34S	309	F34SC	M34SC	635	33'3"	F34W	M34W	336	F34WC	M34WC	707	36'8"
34'	35	F35S	317	F35SC	M35SC	663	34'3"	F35W	M35W	344	F35WC	M35WC	733	37'8"
35'	36	F36S	326	F36SC	M36SC	689	35'3"	F36W	M36W	359	F36WC	M36WC	789	38'8"
36'	37	F37S	334	F37SC	M37SC	705	36'3"	F37W	M37W	367	F37WC	M37WC	804	39'8"
37'	38	F38S	343	F38SC	M38SC	720	37'3"	F38W	M38W	376	F38WC	M38WC	819	40'8"
38'	39	F39S	360	F39SC	M39SC	778	38'3"	F39W	M39W	387	F39WC	M39WC	837	41'8"
39'	40	F40S	369	F40SC	M40SC	793	39'3"	F40W	M40W	395	F40WC	M40WC	853	42'8"
40'	41	F41S	377	F41SC	M41SC	808	40'3"	F41W	M41W	404	F41WC	M41WC	879	43'8"
41'	42	F42S	386	F42SC	M42SC	824	41'3"	F42W	M42W	412	F42WC	M42WC	894	44'8"
42'	43	F43S	394	F43SC	M43SC	839	42'3"	F43W	M43W	421	F43WC	M43WC	909	45'8"
43'	44	F44S	402	F44SC	M44SC	854	43'3"	F44W	M44W	429	F44WC	M44WC	924	46'8"
44'	45	F45S	411	F45SC	M45SC	880	44'3"	F45W	M45W	438	F45WC	M45WC	951	47'8"
45'	46	F46S	419	F46SC	M46SC	907	45'3"	F46W	M46W	452	F46WC	M46WC	1006	48'8"
46'	47	F47S	428	F47SC	M47SC	922	46'3"	F47W	M47W	461	F47WC	M47WC	1022	49'8"
47'	48	F48S	436	F48SC	M48SC	937	47'3"	F48W	M48W	470	F48WC	M48WC	1037	50'8"
48'	49	F49S	454	F49SC	M49SC	995	48'3"	F49W	M49W	480	F49WC	M49WC	1054	51'8"
49'	50	F50S	462	F50SC	M50SC	1011	49'3"	F50W	M50W	489	F50WC	M50WC	1070	52'8"

SHIPPING NOTE: All 15 thru 28 rung Series "F" models with cages ship in 2 sections. All 21 thru 28 rung "F" standard models without cages ship in 2 sections. All 29 thru 38 rung Series "F" standard models ship in 3 sections. All 39 thru 48 rung Series "F" standard models ship in 4 sections. 49 and 50 rung Series "F" standard models ship in 5 sections.

Hot Dip Galvanized finish or Stainless Steel construction can be quoted.
SHIPPING NOTE: All 15 thru 25 rung Series "F" models with cages and walk-thru handrails ship in 2 sections. All 21 thru 25 rung Series "F" walk-thru models without cages ship in 2 sections. All 26 thru 35 rung Series "F" walk-thru models ship in 3 sections. All 36 thru 45 rung Series "F" walk-thru models ship in 4 sections. All 46 thru 50 rung Series "F" walk-thru models ship in 5 sections.

SERIES "C" Welded Steel Cages



SERIES "C" MODEL NUMBERS & MEASUREMENTS

LENGTH	MODEL NUMBER	SHIPPING WEIGHT LBS.	LENGTH	MODEL NUMBER	SHIPPING WEIGHT LBS.
7'6"	C075	229	18'6"	C185	536
8'6"	C085	255	19'6"	C195	561
9'6"	C095	291	20'6"	C205	586
10'6"	C105	316	21'6"	C215	622
11'6"	C115	340	22'6"	C225	646
12'6"	C125	365	23'6"	C235	671
13'6"	C135	401	24'6"	C245	696
14'6"	C145	426	25'6"	C255	732
15'6"	C155	451	26'6"	C265	756
16'6"	C165	476	27'6"	C275	781
17'6"	C175	512			



COTTERMAN® SERIES "C" welded steel cages are one-piece welded assemblies designed for attachment to existing fixed ladders up to 20" wide. A wide range of standard lengths is offered with custom sizes available. To determine the proper length, the cage should begin 7' to 8' from the floor and extend 42" above the landing surface (except for roof hatches).

- Series "C" cages meet applicable OSHA and ANSI standards.
- Standard cage lengths are available from 7'6" to 27'6".
- Cages are crated for shipping protection.
- Wider bottom flare openings are provided for easy entry.
- One-piece all welded steel with gray powder coat finish.
- Hot dip galvanized finish or stainless steel construction can be quoted.

Welded Steel BOLT-ON MODULAR SAFETY CAGES

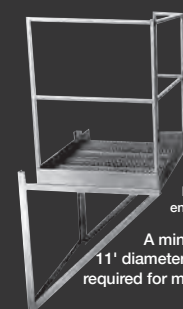


MODEL NUMBER	DESCRIPTION
2MS	2' mid section, bolt on
2BC	2' bottom section, bolt on
3MS	3' mid section, bolt on
3BC	3' bottom section, bolt on
4MC	4' mid section, bolt on
4BC	4' bottom section, bolt on
5WC	5' top section walk-thru, bolt on
7MC	7' mid section, bolt on

Cages mount to the side rails of fixed ladders up to 20" wide. Top and middle sections have a 29" inside diameter; bottom section flares to a 34" inside diameter for easy entry. Include mounting hardware for flat or angle side rails.

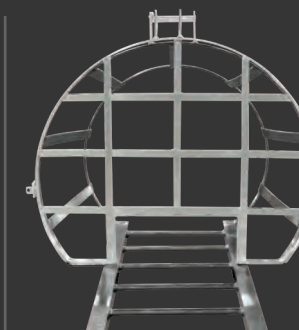
To determine proper length, the cage should begin 7 ft. to 8 ft. from the floor and extend 42" above the landing surface (except for roof hatches). 1 top or middle section and 1 bottom section is required for a complete assembly. Meet applicable OSHA and ANSI standards.

ACCESSORIES Cotterman® fixed steel ladder accessories are designed to provide an additional measure of safety or security for any fixed steel ladder.



SP Standoff Landing Platform
Standoff landing platforms used with offset caged ladders. These rugged, pre-engineered platforms are constructed with left or right entries as required.

OPTION SP shipping weight 153 lbs.



CG Security Cage EntryGate
The cage security gate is designed to prevent unauthorized entry into the bottom of the ladder cage. Security Gate is lockable.

OPTION CG shipping weight 31 lbs.



LG Security Ladder Guard
The ladder guard is mounted directly over the ladder climbing rungs to prevent unauthorized use.

- An adjustable width of 16" to 19" and an additional width of 20%" for Cotterman® ladders.
- Designed to fit around Ladder Safety Systems.

OPTION LG-6 shipping weight 130 lbs.



TRACK LADDERS



DUAL TRAK™ Ladder System

THE DUAL TRAK™ LADDER is designed to provide safe, convenient access to tall shelving on both sides of narrow aisles in storage areas. A 33% increase in vertical storage space is typically achieved.

The key to the Dual Trak™ Ladder is the overhead carriage on which the ladder is mounted. This heavy duty carriage is mounted on dual tracks attached to shelving on both sides of the aisle. The carriage and ladder assembly rolls smoothly on these tracks along the length of the storeroom aisle. Swivel casters on the bottom of the ladder assist in this easy movement and the ladder sets firmly on rubber pad legs while in use. Additionally, the brake ladder rolls from side to side across the aisle on a track mounted on the carriage. This permits easy access to stock on each side and walk-by clearance. A handrail extends above the ladder for use while standing on the upper steps.

To select a dual trak™ mounted ladder

1. Calculate the distance from the floor to the desired track mounting surface which should be no more than 4 feet below the top of the highest merchandise to be reached.
2. Track Kit required for each side of the aisle. (4 ends per aisle and 4' maximum center bracket spacing.)
3. Aisle widths must be identified before ordering correct ladder. Dual Trak™ ladders can be used in aisles from 35" to 61" wide.

SINGLE TRAK™ Ladder System

THE SINGLE TRAK™, mounted shelf ladder is designed to provide easy access to shelves in narrow aisle and cramped storage areas. These ladders have a smooth rolling upper track fixture mounted on straight track at the front shelf edge. 5" wheels with weight actuated brakes allow easy movement of the ladder along the entire length of the track. The rugged all welded steel construction features 5" deep by 14" wide solid steps with abrasive treads.

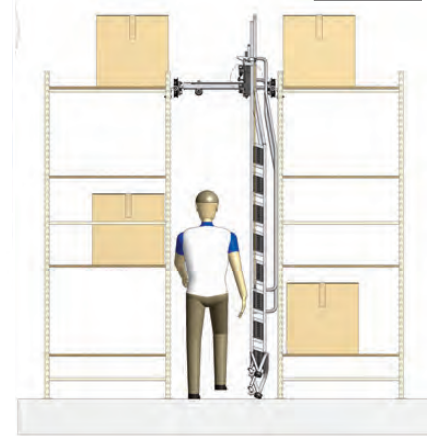
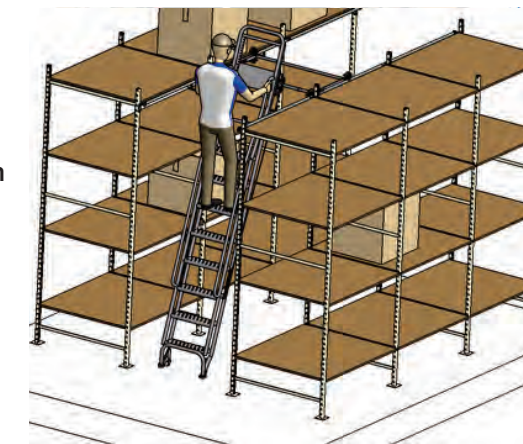
Single Trak™ Ladder System

MODEL NUMBERS & MEASUREMENTS

Dual Trak™ Ladder System MODEL NUMBERS & MEASUREMENTS

LOAD RATING 300 LBS.

NO. OF STEPS	TOP STEP HEIGHT	TRACK MOUNTING RANGE	WORKING HEIGHT (approx.)	STEP WIDTH	ABRASIVE TREAD			PERFORATED TREAD		
					MODEL NUMBER	BASE WIDTH	WEIGHT LBS.	MODEL NUMBER	BASE WIDTH	WEIGHT LBS.
STATIONARY PIVOTING DUAL TRAK™ LADDER FOR AISLES 35" TO 48" WIDE										
6 STEP	60"	Over 85" to 95"	126"	18"	7406-A5-S	20"	79	7406-A6-S	20"	81
7 STEP	70"	Over 95" to 105"	136"	18"	7407-A5-S	20"	84	7407-A6-S	20"	85
8 STEP	80"	Over 105" to 115"	146"	18"	7408-A5-S	20"	89	7408-A6-S	20"	92
9 STEP	90"	Over 115" to 125"	156"	18"	7409-A5-S	20"	98	7409-A6-S	20"	100
10 STEP	100"	Over 125" to 135"	166"	18"	7410-A5-S	20"	104	7410-A6-S	20"	107
11 STEP	110"	Over 135" to 145"	176"	18"	7411-A5-S	20"	108	7411-A6-S	20"	112
12 STEP	120"	Over 145" to 155"	186"	18"	7412-A5-S	20"	115	7412-A6-S	20"	118
LATERAL BRAKE PIVOTING DUAL TRAK™ LADDER FOR AISLES 49" TO 61" WIDE										
6 STEP	60"	Over 85" to 95"	126"	18"	7406-A5-B	20"	79	7406-A6-B	20"	81
7 STEP	70"	Over 95" to 105"	136"	18"	7407-A5-B	20"	84	7407-A6-B	20"	85
8 STEP	80"	Over 105" to 115"	146"	18"	7408-A5-B	20"	89	7408-A6-B	20"	92
9 STEP	90"	Over 115" to 125"	156"	18"	7409-A5-B	20"	98	7409-A6-B	20"	100
10 STEP	100"	Over 125" to 135"	166"	18"	7410-A5-B	20"	104	7410-A6-B	20"	107
11 STEP	110"	Over 135" to 145"	176"	18"	7411-A5-B	20"	108	7411-A6-B	20"	112
12 STEP	120"	Over 145" to 155"	186"	18"	7412-A5-B	20"	115	7412-A6-B	20"	118



Please contact Cotterman® Customer Service for complete details of Track and Mounting Options.

To select a single trak™ mounted ladder

1. From the chart below select the proper model based on top step height required for your application. Keep in mind the maximum working height is approximately 5½ feet above the top step height shown.
2. Based on the model selected, specify the required track height from the floor to the top of the track (in 1" incr.). Stay within ranges shown.

NO. OF STEPS	TOP STEP HEIGHT	TRACK MOUNTING RANGE	WORKING HEIGHT (approx.)	STEP WIDTH	ABRASIVE TREAD			LOAD RATING 300 LBS.
					MODEL NUMBER	BASE WIDTH	WEIGHT LBS.	
5 STEP	50"	85" to 95"	116"	14"	7180-5-A	16"	47	MADE IN U.S.A.
6 STEP	60"	95" to 105"	126"	14"	7180-6-A	16"	51	
7 STEP	70"	105" to 115"	136"	14"	7180-7-A	16"	56	
8 STEP	80"	115" to 125"	146"	14"	7180-8-A	16"	60	
9 STEP	90"	125" to 135"	156"	14"	7180-9-A	16"	64	
10 STEP	100"	135" to 145"	166"	14"	7180-10-A	16"	69	
11 STEP	110"	145" to 155"	176"	14"	7180-11-A	16"	75	

Cotterman®

NATIONAL SUPPORT CENTER



Innovation and Efficiency.

The **Cotterman**® way.

In 2016, Cotterman® added a 30,000 square foot facility to our Croswell, MI plant that bolsters our productivity and efficiency, while providing you with the highest quality serrated treads on the market today. With an all-new proprietary manufacturing process and warehousing facility, we are able to manufacture treads to the exact specifications of each of our ladders without sacrificing quality or production times. What's more, we are able to ship treads and other materials quickly to our 3 other branch plants in Georgia, Texas and California, by the truckload!

Our new serrated tread pushes the limits of innovation. With four-way skirting, four-corner welds and a nearly flawless surface, we've made the finest ladders in America, even better.

At Cotterman®, we never stop innovating, and never stop improving, and our new National Support Center (NSC) is certainly our newest addition to doing just that.



The first NSC shipment of materials to a branch plant (Arlington, Texas).
Shown from left to right: Ryan Vallee (Shipping), Jason Nays (NSC Production), Nick Valore (President), Melissa McGhee (NSC Production), Rob Stimpson (Project Manager)